



[Go to Product page](#)

Datasheet for ABIN6747876
anti-HSPH1 antibody (C-Term)

1 Image

Overview

Quantity:	100 µL
Target:	HSPH1
Binding Specificity:	C-Term
Reactivity:	Human, Mouse, Rat, Monkey, Dog, Guinea Pig, Pig
Host:	Rabbit
Clonality:	Polyclonal
Conjugate:	This HSPH1 antibody is un-conjugated
Application:	Western Blotting (WB)

Product Details

Immunogen:	Synthetic peptide from C-Terminus of rat Hsph1 (Q66HA8, NP_001011901). Percent identity by BLAST analysis: Human, Gorilla, Orangutan, Gibbon, Monkey, Marmoset, Mouse, Rat, Panda, Dog, Guinea pig (100%), Hamster, Bat, Rabbit, Horse (92%), Galago (91%), Bovine (85%), Elephant (84%). Type of Immunogen: Synthetic peptide
Specificity:	Rat HSPH1 / HSP105
Predicted Reactivity:	Percent identity by BLAST analysis: Human, Mouse, Dog, Guinea pig (100%) Rat, Rabbit, Horse (92%).
Purification:	Immunoaffinity purified

Target Details

Target:	HSPH1
Alternative Name:	HSPH1 / HSP110 (HSPH1 Products)
Background:	Name/Gene ID: HSPH1 Synonyms: HSPH1, Heat shock 105kD beta, Heat shock 110 kDa protein, Heat shock protein 105 kDa, HSP105, HSP110, Heat-shock protein 105 kd, HSP105A, HSP105B, NY-CO-25, KIAA0201, Antigen NY-CO-25, Heat shock 105kD alpha, Heat shock 105 kDa protein 1, Heat shock protein 110
Gene ID:	10808
NCBI Accession:	NP_001011901
UniProt:	Q92598

Application Details

Application Notes:	Optimal working dilution should be determined by the investigator.
Comment:	Target Species of Antibody: Rat
Restrictions:	For Research Use only

Handling

Format:	Lyophilized
Reconstitution:	Distilled water
Concentration:	Lot specific
Buffer:	Lyophilized from PBS with 2 % sucrose
Handling Advice:	Avoid repeat freeze-thaw cycles.
Storage:	4 °C, -20 °C
Storage Comment:	Long term: -20°C, the use of 50% glycerol is recommended if storing aliquots in -20°C for long term use (up to 1 year) Short term (less than 1 week): 4°C. Avoid freeze-thaw cycles.

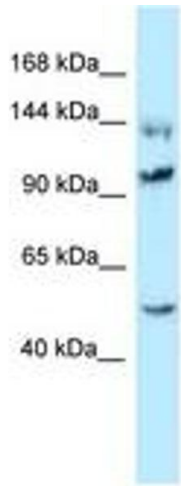


Image 1.