

Datasheet for ABIN6747877

anti-CCDC105 antibody (AA 253-302)[Go to Product page](#)**1** Image

Overview

Quantity:	100 µL
Target:	CCDC105
Binding Specificity:	AA 253-302
Reactivity:	Human, Guinea Pig, Mouse, Monkey
Host:	Rabbit
Clonality:	Polyclonal
Conjugate:	This CCDC105 antibody is un-conjugated
Application:	Western Blotting (WB)

Product Details

Immunogen:	Synthetic peptide located between aa253-302 of human CCDC105 (Q8IYK2, NP_775753). Percent identity by BLAST analysis: Human, Gorilla, Galago, Marmoset, Elephant, Panda, Guinea pig (100%), Gibbon, Rat, Bovine, Rabbit, Horse, Pig (92%), Mouse (85%). Type of Immunogen: Synthetic peptide
Specificity:	Human CCDC105
Predicted Reactivity:	Percent identity by BLAST analysis: Guinea pig (100%) Rabbit, Pig (92%) Mouse (85%).
Purification:	Immunoaffinity purified

Target Details

Target:	CCDC105
---------	---------

Target Details

Alternative Name:	CCDC105 (CCDC105 Products)
Background:	Name/Gene ID: CCDC105
	Synonyms: CCDC105
Gene ID:	126402
NCBI Accession:	NP_775753
UniProt:	Q8IYK2

Application Details

Application Notes:	Optimal working dilution should be determined by the investigator.
Comment:	Target Species of Antibody: Human
Restrictions:	For Research Use only

Handling

Format:	Lyophilized
Reconstitution:	Distilled water
Concentration:	Lot specific
Buffer:	Lyophilized from PBS with 2 % sucrose
Handling Advice:	Avoid repeat freeze-thaw cycles.
Storage:	4 °C,-20 °C
Storage Comment:	Long term: -20°C, the use of 50% glycerol is recommended if storing aliquots in -20°C for long term use (up to 1 year) Short term (less than 1 week): 4°C. Avoid freeze-thaw cycles.

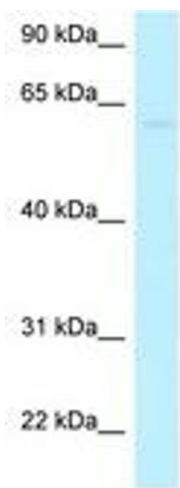


Image 1.