



Datasheet for ABIN6747880
anti-SHCBP1L antibody (AA 525-574)



[Go to Product page](#)

1 Image

Overview

Quantity:	100 µL
Target:	SHCBP1L
Binding Specificity:	AA 525-574
Reactivity:	Human, Cow, Dog, Guinea Pig
Host:	Rabbit
Clonality:	Polyclonal
Conjugate:	This SHCBP1L antibody is un-conjugated
Application:	Western Blotting (WB)

Product Details

Immunogen:	Synthetic peptide located between aa525-574 of human SHCBP1L (Q9BZQ2, NP_112195). Percent identity by BLAST analysis: Human (100%), Chimpanzee, Gorilla, Gibbon, Monkey, Galago, Marmoset, Mouse, Rat, Elephant, Rabbit, Horse (92%), Dog, Bovine, Opossum, Guinea pig (85%). Type of Immunogen: Synthetic peptide
Specificity:	Human SHCBP1L
Predicted Reactivity:	Percent identity by BLAST analysis: Rat, Rabbit, Horse (92%) Dog, Bovine, Guinea pig (85%).
Purification:	Immunoaffinity purified

Target Details

Target:	SHCBP1L
Alternative Name:	SHCBP1L / C1orf14 (SHCBP1L Products)
Background:	Name/Gene ID: SHCBP1L Synonyms: SHCBP1L, C1orf14, GE36
Gene ID:	81626
NCBI Accession:	NP_112195
UniProt:	Q9BZQ2

Application Details

Application Notes:	Optimal working dilution should be determined by the investigator.
Comment:	Target Species of Antibody: Human
Restrictions:	For Research Use only

Handling

Format:	Lyophilized
Reconstitution:	Distilled water
Concentration:	Lot specific
Buffer:	Lyophilized from PBS with 2 % sucrose
Handling Advice:	Avoid repeat freeze-thaw cycles.
Storage:	4 °C, -20 °C
Storage Comment:	Long term: -20°C, the use of 50% glycerol is recommended if storing aliquots in -20°C for long term use (up to 1 year) Short term (less than 1 week): 4°C. Avoid freeze-thaw cycles.

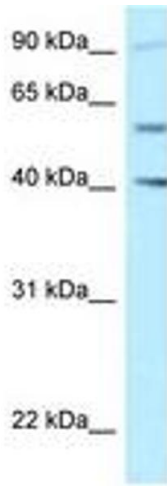


Image 1.