



[Go to Product page](#)

Datasheet for ABIN6747894  
**anti-FKBP14 antibody (C-Term)**

1 Image

Overview

Quantity:	100 µL
Target:	FKBP14
Binding Specificity:	C-Term
Reactivity:	Human, Cow, Zebrafish (Danio rerio), Monkey
Host:	Rabbit
Clonality:	Polyclonal
Conjugate:	This FKBP14 antibody is un-conjugated
Application:	Western Blotting (WB)

Product Details

Immunogen:	Synthetic peptide from C-Terminus of human FKBP14 (Q9NWM8, NP_060416). Percent identity by BLAST analysis: Human, Chimpanzee, Gorilla, Orangutan, Gibbon, Monkey, Marmoset (100%), Galago, Elephant, Bat, Horse, Lizard (92%), Platypus (91%), Hamster, Panda, Bovine, Rabbit, Opossum, Turkey, Zebra finch, Chicken, Xenopus, Pufferfish (85%).  Type of Immunogen: Synthetic peptide
Specificity:	Human FKBP14
Predicted Reactivity:	Percent identity by BLAST analysis: Bovine, Chicken, Xenopus (85%).
Purification:	Immunoaffinity purified

## Target Details

---

Target:	FKBP14
Alternative Name:	FKBP14 ( <a href="#">FKBP14 Products</a> )
Background:	Name/Gene ID: FKBP14  Synonyms: FKBP14, 22 kDa FK506-binding protein, 22 kDa FKBP, FK506-binding protein 14, EDSKMH, IPBP12, FKBP-14, FKBP-22, FKBP22, Rotamase, PPlase FKBP14
Gene ID:	55033
NCBI Accession:	<a href="#">NP_060416</a>
UniProt:	<a href="#">Q9NWM8</a>
Pathways:	<a href="#">ER-Nucleus Signaling</a>

## Application Details

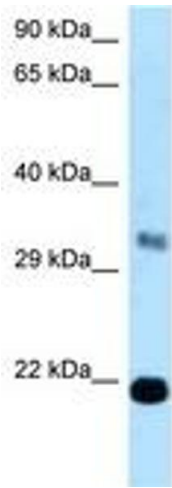
---

Application Notes:	Optimal working dilution should be determined by the investigator.
Comment:	Target Species of Antibody: Human
Restrictions:	For Research Use only

## Handling

---

Format:	Lyophilized
Reconstitution:	Distilled water
Concentration:	Lot specific
Buffer:	Lyophilized from PBS with 2 % sucrose
Handling Advice:	Avoid repeat freeze-thaw cycles.
Storage:	4 °C,-20 °C
Storage Comment:	Long term: -20°C, the use of 50% glycerol is recommended if storing aliquots in -20°C for long term use (up to 1 year)  Short term (less than 1 week): 4°C. Avoid freeze-thaw cycles.



**Image 1.**