



Datasheet for ABIN6747900
anti-ALDH3B2 antibody (AA 216-265)



[Go to Product page](#)

1 Image

Overview

Quantity:	100 µL
Target:	ALDH3B2
Binding Specificity:	AA 216-265
Reactivity:	Human, Rat, Mouse, Cow
Host:	Rabbit
Clonality:	Polyclonal
Conjugate:	This ALDH3B2 antibody is un-conjugated
Application:	Western Blotting (WB)

Product Details

Immunogen:	Synthetic peptide located between aa216-265 of human ALDH3B2 (P48448, NP_000686). Percent identity by BLAST analysis: Human, Chimpanzee (100%), Gorilla, Gibbon, Monkey (92%), Galago, Marmoset, Horse (85%), Mouse, Rat (78%). Type of Immunogen: Synthetic peptide
Specificity:	Human ALDH3B2
Predicted Reactivity:	Percent identity by BLAST analysis:
Purification:	Immunoaffinity purified

Target Details

Target:	ALDH3B2
---------	---------

Target Details

Alternative Name:	ALDH3B2 (ALDH3B2 Products)
Background:	Name/Gene ID: ALDH3B2 Synonyms: ALDH3B2, Acetaldehyde dehydrogenase 8, ALDH8, Aldehyde dehydrogenase 8
Gene ID:	222
NCBI Accession:	NP_000686
UniProt:	P48448

Application Details

Application Notes:	Optimal working dilution should be determined by the investigator.
Comment:	Target Species of Antibody: Human
Restrictions:	For Research Use only

Handling

Format:	Lyophilized
Reconstitution:	Distilled water
Concentration:	Lot specific
Buffer:	Lyophilized from PBS with 2 % sucrose
Handling Advice:	Avoid repeat freeze-thaw cycles.
Storage:	4 °C,-20 °C
Storage Comment:	Long term: -20°C, the use of 50% glycerol is recommended if storing aliquots in -20°C for long term use (up to 1 year) Short term (less than 1 week): 4°C. Avoid freeze-thaw cycles.

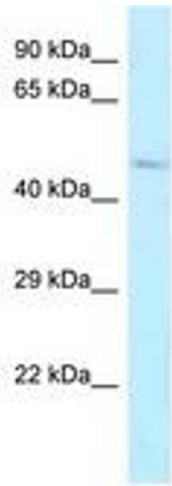


Image 1.