



[Go to Product page](#)

Datasheet for ABIN6747901  
**anti-ALDH3B2 antibody (AA 39-88)**

1 Image

### Overview

Quantity:	100 µL
Target:	ALDH3B2
Binding Specificity:	AA 39-88
Reactivity:	Human, Rat, Mouse, Dog, Monkey, Bat
Host:	Rabbit
Clonality:	Polyclonal
Conjugate:	This ALDH3B2 antibody is un-conjugated
Application:	Western Blotting (WB)

### Product Details

Immunogen:	Synthetic peptide located between aa39-88 of human ALDH3B2 (P48448, NP_000686). Percent identity by BLAST analysis: Human, Gorilla, Gibbon, Monkey, Marmoset, Bat (100%), Galago, Guinea pig (92%), Mouse, Bovine (85%), Rat (78%).  Type of Immunogen: Synthetic peptide
Specificity:	Human ALDH3B2
Predicted Reactivity:	Percent identity by BLAST analysis: Human (100%) Guinea pig (92%) Mouse (85%).
Purification:	Immunoaffinity purified

### Target Details

Target:	ALDH3B2
---------	---------

## Target Details

---

Alternative Name:	ALDH3B2 ( <a href="#">ALDH3B2 Products</a> )
Background:	Name/Gene ID: ALDH3B2  Synonyms: ALDH3B2, Acetaldehyde dehydrogenase 8, ALDH8, Aldehyde dehydrogenase 8
Gene ID:	222
NCBI Accession:	<a href="#">NP_000686</a>
UniProt:	<a href="#">P48448</a>

## Application Details

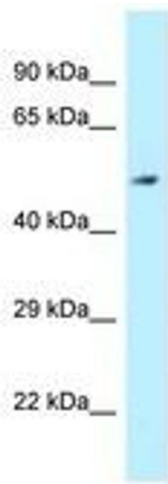
---

Application Notes:	Optimal working dilution should be determined by the investigator.
Comment:	Target Species of Antibody: Human
Restrictions:	For Research Use only

## Handling

---

Format:	Lyophilized
Reconstitution:	Distilled water
Concentration:	Lot specific
Buffer:	Lyophilized from PBS with 2 % sucrose
Handling Advice:	Avoid repeat freeze-thaw cycles.
Storage:	4 °C,-20 °C
Storage Comment:	Long term: -20°C, the use of 50% glycerol is recommended if storing aliquots in -20°C for long term use (up to 1 year)  Short term (less than 1 week): 4°C. Avoid freeze-thaw cycles.



**Image 1.**