



[Go to Product page](#)

Datasheet for ABIN6747903

anti-LDAH/C2orf43 antibody (AA 255-304)

1 Image

Overview

Quantity:	100 µL
Target:	LDAH/C2orf43 (LDAH)
Binding Specificity:	AA 255-304
Reactivity:	Human, Dog, Guinea Pig, Rabbit, Monkey
Host:	Rabbit
Clonality:	Polyclonal
Conjugate:	This LDAH/C2orf43 antibody is un-conjugated
Application:	Western Blotting (WB)

Product Details

Immunogen:	Synthetic peptide located between aa255-304 of human C2orf43 (Q9H6V9, NP_068744). Percent identity by BLAST analysis: Human, Chimpanzee, Gorilla, Orangutan, Gibbon, Monkey, Galago, Dog, Rabbit (100%), Horse (92%), Platypus (91%), Mouse, Opossum (90%), Bat (85%), Rat (81%). Type of Immunogen: Synthetic peptide
Specificity:	Human C2orf43
Predicted Reactivity:	Percent identity by BLAST analysis: Human, Dog, Rabbit (100%) Horse (92%).
Purification:	Immunoaffinity purified

Target Details

Target:	LDAH/C2orf43 (LDAH)
Alternative Name:	LDAH (LDAH Products)
Background:	Name/Gene ID: LDAH Synonyms: LDAH, UPF0554 protein C2orf43, C2orf43
Gene ID:	60526
NCBI Accession:	NP_068744
UniProt:	Q9H6V9

Application Details

Application Notes:	Optimal working dilution should be determined by the investigator.
Comment:	Target Species of Antibody: Human
Restrictions:	For Research Use only

Handling

Format:	Lyophilized
Reconstitution:	Distilled water
Concentration:	Lot specific
Buffer:	Lyophilized from PBS with 2 % sucrose
Handling Advice:	Avoid repeat freeze-thaw cycles.
Storage:	4 °C, -20 °C
Storage Comment:	Long term: -20°C, the use of 50% glycerol is recommended if storing aliquots in -20°C for long term use (up to 1 year) Short term (less than 1 week): 4°C. Avoid freeze-thaw cycles.

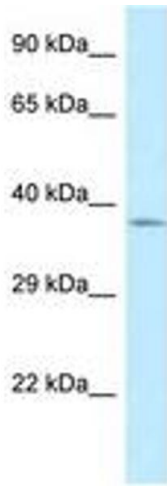


Image 1.