



[Go to Product page](#)

Datasheet for ABIN6747905
anti-CCDC68 antibody (AA 121-170)

1 Image

Overview

Quantity:	100 µL
Target:	CCDC68
Binding Specificity:	AA 121-170
Reactivity:	Human, Dog
Host:	Rabbit
Clonality:	Polyclonal
Conjugate:	This CCDC68 antibody is un-conjugated
Application:	Western Blotting (WB)

Product Details

Immunogen:	Synthetic peptide located between aa121-170 of human CCDC68 (Q9H2F9, NP_079490). Percent identity by BLAST analysis: Human, Chimpanzee (100%), Gorilla, Gibbon (92%), Monkey (85%), Marmoset (84%), Elephant (83%). Type of Immunogen: Synthetic peptide
Specificity:	Human CCDC68
Predicted Reactivity:	Percent identity by BLAST analysis:
Purification:	Immunoaffinity purified

Target Details

Target:	CCDC68
---------	--------

Target Details

Alternative Name:	CCDC68 (CCDC68 Products)
Background:	Name/Gene ID: CCDC68 Synonyms: CCDC68, CTCL tumor antigen se57-1, CTCL-associated antigen se57-1, SE57-1
Gene ID:	80323
NCBI Accession:	NP_079490
UniProt:	Q9H2F9

Application Details

Application Notes:	Optimal working dilution should be determined by the investigator.
Comment:	Target Species of Antibody: Human
Restrictions:	For Research Use only

Handling

Format:	Lyophilized
Reconstitution:	Distilled water
Concentration:	Lot specific
Buffer:	Lyophilized from PBS with 2 % sucrose
Handling Advice:	Avoid repeat freeze-thaw cycles.
Storage:	4 °C,-20 °C
Storage Comment:	Long term: -20°C, the use of 50% glycerol is recommended if storing aliquots in -20°C for long term use (up to 1 year) Short term (less than 1 week): 4°C. Avoid freeze-thaw cycles.

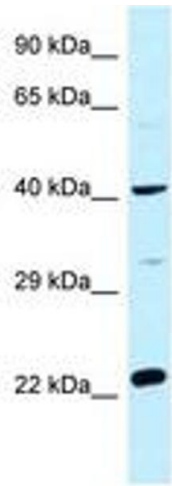


Image 1.