



[Go to Product page](#)

Datasheet for ABIN6747906
anti-CRISPLD1 antibody (AA 206-255)

1 Image

Overview

Quantity:	100 µL
Target:	CRISPLD1
Binding Specificity:	AA 206-255
Reactivity:	Human, Cow, Dog, Horse, Rabbit, Rat
Host:	Rabbit
Clonality:	Polyclonal
Conjugate:	This CRISPLD1 antibody is un-conjugated
Application:	Western Blotting (WB)

Product Details

Immunogen:	Synthetic peptide located between aa206-255 of human CRISPLD1 (Q9H336, NP_113649). Percent identity by BLAST analysis: Human, Chimpanzee, Gorilla, Galago, Panda, Dog, Rabbit (100%), Gibbon, Mouse, Bat, Pig, Guinea pig (92%), Monkey, Elephant, Horse (85%), Rat (78%). Type of Immunogen: Synthetic peptide
Specificity:	Human CRISPLD1
Predicted Reactivity:	Percent identity by BLAST analysis: Human, Dog, Rabbit (100%) Pig (92%) Horse (85%).
Purification:	Immunoaffinity purified

Target Details

Target:	CRISPLD1
---------	----------

Target Details

Alternative Name:	CRISPLD1 (CRISPLD1 Products)
Background:	Name/Gene ID: CRISPLD1 Synonyms: CRISPLD1, CocoaCrisp, CRISP10, LCRISP1, Trypsin inhibitor HI, CRISP-10
Gene ID:	83690
NCBI Accession:	NP_113649
UniProt:	Q9H336

Application Details

Application Notes:	Optimal working dilution should be determined by the investigator.
Comment:	Target Species of Antibody: Human
Restrictions:	For Research Use only

Handling

Format:	Lyophilized
Reconstitution:	Distilled water
Concentration:	Lot specific
Buffer:	Lyophilized from PBS with 2 % sucrose
Handling Advice:	Avoid repeat freeze-thaw cycles.
Storage:	4 °C,-20 °C
Storage Comment:	Long term: -20°C, the use of 50% glycerol is recommended if storing aliquots in -20°C for long term use (up to 1 year) Short term (less than 1 week): 4°C. Avoid freeze-thaw cycles.

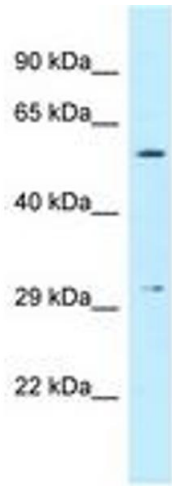


Image 1.