



[Go to Product page](#)

Datasheet for ABIN6747922
anti-EVA1B antibody (AA 101-150)

1 Image

Overview

Quantity:	100 µL
Target:	EVA1B
Binding Specificity:	AA 101-150
Reactivity:	Horse, Human, Mouse, Rabbit, Rat
Host:	Rabbit
Clonality:	Polyclonal
Conjugate:	This EVA1B antibody is un-conjugated
Application:	Western Blotting (WB)

Product Details

Immunogen:	Synthetic peptide located between aa101-150 of rat Eva1b (B2RZB3, NP_001102149). Percent identity by BLAST analysis: Human, Gorilla, Gibbon, Rat, Horse (100%), Galago, Marmoset, Hamster (92%), Guinea pig (86%), Monkey, Panda, Rabbit (85%), Mouse, Elephant (81%). Type of Immunogen: Synthetic peptide
Specificity:	Rat Fam176b
Predicted Reactivity:	Percent identity by BLAST analysis: Rat (93%) Rabbit (85%) Mouse (81%).
Purification:	Immunoaffinity purified

Target Details

Target:	EVA1B
---------	-------

Target Details

Alternative Name: EVA1B ([EVA1B Products](#))

Background: Name/Gene ID: EVA1B

Synonyms: EVA1B, FAM176B, Eva-1 homolog B (C. elegans), RP11-268J15.2, C1orf78

Gene ID: 55194

NCBI Accession: [NP_001102149](#)

UniProt: [Q9NVM1](#)

Application Details

Application Notes: Optimal working dilution should be determined by the investigator.

Comment: Target Species of Antibody: Rat

Restrictions: For Research Use only

Handling

Format: Lyophilized

Reconstitution: Distilled water

Concentration: Lot specific

Buffer: Lyophilized from PBS with 2 % sucrose

Handling Advice: Avoid repeat freeze-thaw cycles.

Storage: 4 °C, -20 °C

Storage Comment: Long term: -20°C, the use of 50% glycerol is recommended if storing aliquots in -20°C for long term use (up to 1 year)
Short term (less than 1 week): 4°C. Avoid freeze-thaw cycles.

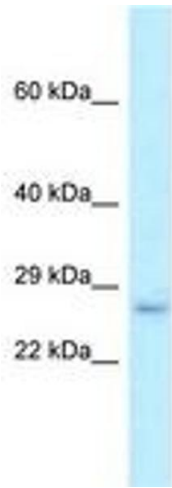


Image 1.