

Datasheet for ABIN6747925
anti-EEPD1 antibody (N-Term)



[Go to Product page](#)

1 Image

Overview

| | |
|----------------------|---|
| Quantity: | 100 µL |
| Target: | EEPD1 |
| Binding Specificity: | N-Term |
| Reactivity: | Human, Mouse, Rat, Horse, Rabbit, Cow, Dog, Guinea Pig, Monkey, Hamster |
| Host: | Rabbit |
| Clonality: | Polyclonal |
| Conjugate: | This EEPD1 antibody is un-conjugated |
| Application: | Western Blotting (WB) |

Product Details

| | |
|-----------------------|--|
| Immunogen: | Synthetic peptide from N-Terminus of mouse Eepd1 (Q3TGW2, NP_080465). Percent identity by BLAST analysis: Human, Gorilla, Gibbon, Monkey, Galago, Marmoset, Mouse, Rat, Hamster, Elephant, Panda, Dog, Bovine, Rabbit, Horse, Guinea pig (100%), Opossum, Xenopus (90%), Chicken (85%), Stickleback (83%). Type of Immunogen: Synthetic peptide |
| Specificity: | Mouse Eepd1 |
| Predicted Reactivity: | Percent identity by BLAST analysis: Human, Mouse, Rat, Dog, Bovine, Rabbit (100%) Xenopus (90%) Chicken (85%). |
| Purification: | Immunoaffinity purified |

Target Details

| | |
|-------------------|---|
| Target: | EEPD1 |
| Alternative Name: | Eepd1 (EEPD1 Products) |
| Background: | Name/Gene ID: EEPD1 Synonyms: EEPD1, HSPC107, KIAA1706 |
| Gene ID: | 80820 |
| NCBI Accession: | NP_080465 |
| UniProt: | Q3TGW2 |

Application Details

| | |
|--------------------|--|
| Application Notes: | Optimal working dilution should be determined by the investigator. |
| Comment: | Target Species of Antibody: Mouse |
| Restrictions: | For Research Use only |

Handling

| | |
|------------------|---|
| Format: | Lyophilized |
| Reconstitution: | Distilled water |
| Concentration: | Lot specific |
| Buffer: | Lyophilized from PBS with 2 % sucrose |
| Handling Advice: | Avoid repeat freeze-thaw cycles. |
| Storage: | 4 °C, -20 °C |
| Storage Comment: | Long term: -20°C, the use of 50% glycerol is recommended if storing aliquots in -20°C for long term use (up to 1 year) Short term (less than 1 week): 4°C. Avoid freeze-thaw cycles. |

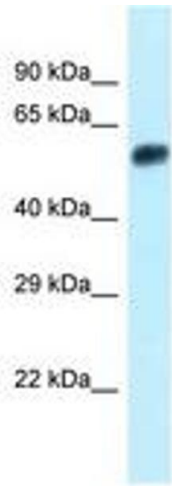


Image 1.