



[Go to Product page](#)

Datasheet for ABIN6747936
anti-RAB33B antibody (AA 80-129)

1 Image

Overview

Quantity:	100 µL
Target:	RAB33B
Binding Specificity:	AA 80-129
Reactivity:	Human, Mouse, Rat, Dog, Guinea Pig, Horse, Pig, Zebrafish (Danio rerio), Bat, Chicken, Hamster, Monkey, Xenopus laevis
Host:	Rabbit
Clonality:	Polyclonal
Conjugate:	This RAB33B antibody is un-conjugated
Application:	Western Blotting (WB)

Product Details

Immunogen:	Synthetic peptide located between aa80-129 of human RAB33B (Q9H082, NP_112586). Percent identity by BLAST analysis: Human, Gorilla, Orangutan, Gibbon, Monkey, Galago, Marmoset, Mouse, Rat, Hamster, Elephant, Panda, Dog, Bat, Horse, Pig, Opossum, Guinea pig, Turkey, Zebra finch, Chicken, Platypus, Lizard, Xenopus, Salmon, Stickleback, Zebrafish, Sea squirt (100%), Bovine, Rabbit, Beetle (92%), Drosophila (90%), Slime mold, Arabidopsis (84%). Type of Immunogen: Synthetic peptide
Specificity:	Human RAB33B
Predicted Reactivity:	Percent identity by BLAST analysis: Human, Mouse, Rat, Dog, Guinea pig, Zebrafish (100%) Bovine, Xenopus (92%).

Product Details

Purification: Immunoaffinity purified

Target Details

Target: RAB33B

Alternative Name: RAB33B ([RAB33B Products](#))

Background: Name/Gene ID: RAB33B
Subfamily: RAS oncogene
Family: Ras GTPase superfamily IPR001806

Synonyms: RAB33B, DKFZP434G099, Ras-related protein Rab-33B

Gene ID: 83452

NCBI Accession: [NP_112586](#)

UniProt: [Q9H082](#)

Application Details

Application Notes: Optimal working dilution should be determined by the investigator.

Comment: Target Species of Antibody: Human

Restrictions: For Research Use only

Handling

Format: Lyophilized

Reconstitution: Distilled water

Concentration: Lot specific

Buffer: Lyophilized from PBS with 2 % sucrose

Handling Advice: Avoid repeat freeze-thaw cycles.

Storage: 4 °C, -20 °C

Storage Comment: Long term: -20°C, the use of 50% glycerol is recommended if storing aliquots in -20°C for long term use (up to 1 year)
Short term (less than 1 week): 4°C. Avoid freeze-thaw cycles.

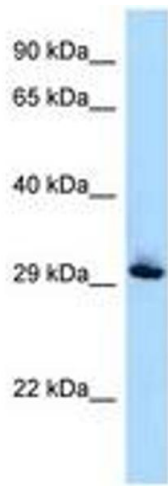


Image 1.