



[Go to Product page](#)

Datasheet for ABIN6747938  
**anti-PSKH2 antibody (AA 84-133)**

1 Image

Overview

Quantity:	100 µL
Target:	PSKH2
Binding Specificity:	AA 84-133
Reactivity:	Human
Host:	Rabbit
Clonality:	Polyclonal
Conjugate:	This PSKH2 antibody is un-conjugated
Application:	Western Blotting (WB)

Product Details

Immunogen:	Synthetic peptide located between aa84-133 of human PSKH2 (Q96QS6, NP_149117). Percent identity by BLAST analysis: Human, Gorilla, Gibbon (100%), Monkey (92%), Elephant, Panda, Horse, Guinea pig (91%), Dog (90%).  Type of Immunogen: Synthetic peptide
Specificity:	Human PSKH2
Predicted Reactivity:	Percent identity by BLAST analysis: Horse, Guinea pig (91%) Dog (90%).
Purification:	Immunoaffinity purified

Target Details

Target:	PSKH2
---------	-------

## Target Details

---

Alternative Name: PSKH2 ([PSKH2 Products](#))

---

Background: Name/Gene ID: PSKH2  
Subfamily: PSK  
Family: Protein Kinase

Synonyms: PSKH2, Serine/threonine kinase PSKH2, Protein serine kinase H2, PSK-H2

---

Gene ID: 85481

---

NCBI Accession: [NP\\_149117](#)

---

UniProt: [Q96QS6](#)

---

## Application Details

---

Application Notes: Optimal working dilution should be determined by the investigator.

---

Comment: Target Species of Antibody: Human

---

Restrictions: For Research Use only

---

## Handling

---

Format: Lyophilized

---

Reconstitution: Distilled water

---

Concentration: Lot specific

---

Buffer: Lyophilized from PBS with 2 % sucrose

---

Handling Advice: Avoid repeat freeze-thaw cycles.

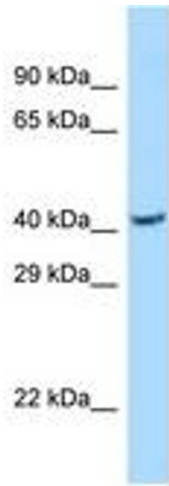
---

Storage: 4 °C, -20 °C

---

Storage Comment: Long term: -20°C, the use of 50% glycerol is recommended if storing aliquots in -20°C for long term use (up to 1 year)

Short term (less than 1 week): 4°C. Avoid freeze-thaw cycles.



**Image 1.**