



[Go to Product page](#)

Datasheet for ABIN6747950
anti-GHDC antibody (AA 70-119)

1 Image

Overview

Quantity:	100 µL
Target:	GHDC
Binding Specificity:	AA 70-119
Reactivity:	Human
Host:	Rabbit
Clonality:	Polyclonal
Conjugate:	This GHDC antibody is un-conjugated
Application:	Western Blotting (WB)

Product Details

Immunogen:	Synthetic peptide located between aa70-119 of human GHDC (B3KVB0, NP_001136095). Percent identity by BLAST analysis: Human (100%), Gorilla, Monkey (85%). Type of Immunogen: Synthetic peptide
Specificity:	Human GHDC
Predicted Reactivity:	Percent identity by BLAST analysis: Human (100%).
Purification:	Immunoaffinity purified

Target Details

Target:	GHDC
Alternative Name:	GHDC (GHDC Products)

Target Details

Background:	Name/Gene ID: GHDC Synonyms: GHDC, D11LGP1E, D11LGP1, Homolog of mouse LGP1, LGP1, GH3 domain containing, GH3 domain-containing protein
Gene ID:	84514
NCBI Accession:	NP_001136095
UniProt:	Q8N2G8

Application Details

Application Notes:	Optimal working dilution should be determined by the investigator.
Comment:	Target Species of Antibody: Human
Restrictions:	For Research Use only

Handling

Format:	Lyophilized
Reconstitution:	Distilled water
Concentration:	Lot specific
Buffer:	Lyophilized from PBS with 2 % sucrose
Handling Advice:	Avoid repeat freeze-thaw cycles.
Storage:	4 °C,-20 °C
Storage Comment:	Long term: -20°C, the use of 50% glycerol is recommended if storing aliquots in -20°C for long term use (up to 1 year) Short term (less than 1 week): 4°C. Avoid freeze-thaw cycles.

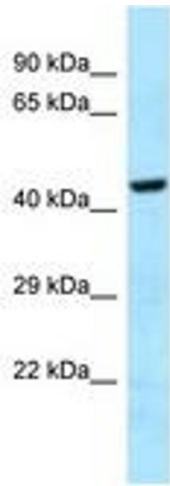


Image 1.