



[Go to Product page](#)

Datasheet for ABIN6747952
anti-KIF1BP antibody (AA 336-385)

1 Image

Overview

Quantity:	100 µL
Target:	KIF1BP (KIAA1279)
Binding Specificity:	AA 336-385
Reactivity:	Human, Guinea Pig, Rabbit, Monkey
Host:	Rabbit
Clonality:	Polyclonal
Conjugate:	This KIF1BP antibody is un-conjugated
Application:	Western Blotting (WB)

Product Details

Immunogen:	Synthetic peptide located between aa336-385 of human KIAA1279 (Q96EK5, NP_056449). Percent identity by BLAST analysis: Human, Chimpanzee, Gorilla, Gibbon, Monkey, Marmoset, Rabbit, Guinea pig (100%), Galago, Mouse, Elephant, Dog, Bovine, Bat, Horse, Pig (92%), Panda (85%), Rat (84%). Type of Immunogen: Synthetic peptide
Specificity:	Human KIAA1279
Predicted Reactivity:	Percent identity by BLAST analysis: Dog (92%).
Purification:	Immunoaffinity purified

Target Details

Target: KIF1BP (KIAA1279)

Alternative Name: KIF1BP ([KIAA1279 Products](#))

Background: Name/Gene ID: KIF1BP

Synonyms: KIF1BP, DKFZP586B0923, KBP, KIF1-binding protein, KIAA1279, TTC20

Gene ID: 26128

NCBI Accession: [NP_056449](#)

UniProt: [Q96EK5](#)

Application Details

Application Notes: Optimal working dilution should be determined by the investigator.

Comment: Target Species of Antibody: Human

Restrictions: For Research Use only

Handling

Format: Lyophilized

Reconstitution: Distilled water

Concentration: Lot specific

Buffer: Lyophilized from PBS with 2 % sucrose

Handling Advice: Avoid repeat freeze-thaw cycles.

Storage: 4 °C, -20 °C

Storage Comment: Long term: -20°C, the use of 50% glycerol is recommended if storing aliquots in -20°C for long term use (up to 1 year)

Short term (less than 1 week): 4°C. Avoid freeze-thaw cycles.

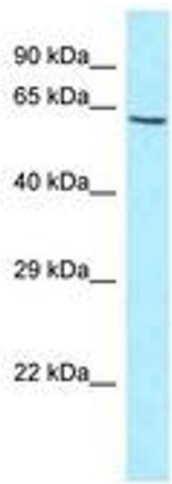


Image 1.