



[Go to Product page](#)

Datasheet for ABIN6747961  
**anti-SNX21 antibody (AA 69-118)**

1 Image

Overview

Quantity:	100 µL
Target:	SNX21
Binding Specificity:	AA 69-118
Reactivity:	Human, Dog, Mouse, Rabbit, Monkey, Pig
Host:	Rabbit
Clonality:	Polyclonal
Conjugate:	This SNX21 antibody is un-conjugated
Application:	Western Blotting (WB)

Product Details

Immunogen:	Synthetic peptide located between aa69-118 of human SNX21 (Q969T3, NP_219489). Percent identity by BLAST analysis: Human, Gorilla, Gibbon, Marmoset, Mouse, Dog (100%), Horse, Guinea pig (92%), Galago, Rabbit (85%), Elephant, Pig (84%).  Type of Immunogen: Synthetic peptide
Specificity:	Human SNX21
Predicted Reactivity:	Percent identity by BLAST analysis: Human, Mouse, Dog (100%) Horse, Guinea pig (92%) Rabbit (85%) Pig (84%).
Purification:	Immunoaffinity purified

## Target Details

---

Target:	SNX21
Alternative Name:	SNX21 ( <a href="#">SNX21 Products</a> )
Background:	Name/Gene ID: SNX21  Synonyms: SNX21, C20orf161, PP3993, Sorting nexin 21, Sorting nexin family member 21, Sorting nexin-21, SNX-L, DJ337018.4, SNXL, Sorting nexin L
Gene ID:	90203
NCBI Accession:	<a href="#">NP_219489</a>
UniProt:	<a href="#">Q969T3</a>

## Application Details

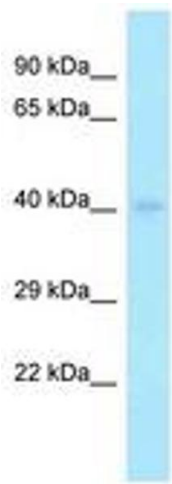
---

Application Notes:	Optimal working dilution should be determined by the investigator.
Comment:	Target Species of Antibody: Human
Restrictions:	For Research Use only

## Handling

---

Format:	Lyophilized
Reconstitution:	Distilled water
Concentration:	Lot specific
Buffer:	Lyophilized from PBS with 2 % sucrose
Handling Advice:	Avoid repeat freeze-thaw cycles.
Storage:	4 °C, -20 °C
Storage Comment:	Long term: -20°C, the use of 50% glycerol is recommended if storing aliquots in -20°C for long term use (up to 1 year)  Short term (less than 1 week): 4°C. Avoid freeze-thaw cycles.



**Image 1.**