



[Go to Product page](#)

Datasheet for ABIN6747986  
**anti-PHLDA2 antibody (N-Term)**

1 Image

Overview

Quantity:	100 µL
Target:	PHLDA2
Binding Specificity:	N-Term
Reactivity:	Human, Horse, Monkey, Pig
Host:	Rabbit
Clonality:	Polyclonal
Conjugate:	This PHLDA2 antibody is un-conjugated
Application:	Western Blotting (WB)

Product Details

Immunogen:	Synthetic peptide from N-Terminus of human PHLDA2 (Q53GA4, NP_003302). Percent identity by BLAST analysis: Human, Chimpanzee, Gorilla, Gibbon, Marmoset (100%), Bovine (92%), Galago, Horse, Pig, Guinea pig (85%).  Type of Immunogen: Synthetic peptide
Specificity:	Human PHLDA2
Predicted Reactivity:	Percent identity by BLAST analysis: Horse, Pig (85%) Bovine (84%).
Purification:	Immunoaffinity purified

Target Details

Target:	PHLDA2
---------	--------

## Target Details

---

Alternative Name:	PHLDA2 / TSSC3 ( <a href="#">PHLDA2 Products</a> )
Background:	Name/Gene ID: PHLDA2  Synonyms: PHLDA2, BWR1C, IPL, HLDA2, p17-BWR1C, BRW1C, TSSC3, Tumor-suppressing STF cDNA 3
Gene ID:	7262
NCBI Accession:	<a href="#">NP_003302</a>
UniProt:	<a href="#">Q53GA4</a>
Pathways:	<a href="#">Regulation of Carbohydrate Metabolic Process</a>

## Application Details

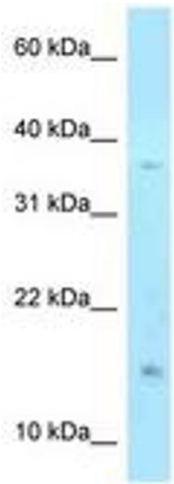
---

Application Notes:	Optimal working dilution should be determined by the investigator.
Comment:	Target Species of Antibody: Human
Restrictions:	For Research Use only

## Handling

---

Format:	Lyophilized
Reconstitution:	Distilled water
Concentration:	Lot specific
Buffer:	Lyophilized from PBS with 2 % sucrose
Handling Advice:	Avoid repeat freeze-thaw cycles.
Storage:	4 °C, -20 °C
Storage Comment:	Long term: -20°C, the use of 50% glycerol is recommended if storing aliquots in -20°C for long term use (up to 1 year)  Short term (less than 1 week): 4°C. Avoid freeze-thaw cycles.



**Image 1.**