



[Go to Product page](#)

Datasheet for ABIN6747994
anti-AVPR1A antibody (C-Term)

1 Image

Overview

Quantity:	100 µL
Target:	AVPR1A
Binding Specificity:	C-Term
Reactivity:	Human, Rat, Pig, Dog, Sheep, Monkey
Host:	Rabbit
Clonality:	Polyclonal
Conjugate:	This AVPR1A antibody is un-conjugated
Application:	Western Blotting (WB)

Product Details

Immunogen:	Synthetic peptide from C-Terminus of human AVPR1A (P37288, NP_000697). Percent identity by BLAST analysis: Human, Chimpanzee, Gorilla, Gibbon, Monkey, Galago, Rat, Pig (100%), Mouse, Rabbit, Horse, Opossum, Guinea pig (92%), Sheep, Hamster, Elephant (85%), Bat (84%). Type of Immunogen: Synthetic peptide
Specificity:	Human AVPR1A
Predicted Reactivity:	Percent identity by BLAST analysis: Human (100%) Mouse, Rabbit, Horse (92%) Sheep, Pig (85%).
Purification:	Immunoaffinity purified

Target Details

Target:	AVPR1A
Alternative Name:	AVPR1A / V1a Receptor (AVPR1A Products)
Background:	Name/Gene ID: AVPR1A Subfamily: Vasopressin/oxytocin Family: GPCR Synonyms: AVPR1A, AVPR V1a, V1a receptor, AVPR1, V1a vasopressin receptor, Vasopressin V1a receptor, V1aR
Gene ID:	552
NCBI Accession:	NP_000697
UniProt:	P37288
Pathways:	Regulation of Systemic Arterial Blood Pressure by Hormones , Response to Water Deprivation , Regulation of Carbohydrate Metabolic Process

Application Details

Application Notes:	Optimal working dilution should be determined by the investigator.
Comment:	Target Species of Antibody: Human
Restrictions:	For Research Use only

Handling

Format:	Lyophilized
Reconstitution:	Distilled water
Concentration:	Lot specific
Buffer:	Lyophilized from PBS with 2 % sucrose
Handling Advice:	Avoid repeat freeze-thaw cycles.
Storage:	4 °C,-20 °C
Storage Comment:	Long term: -20°C, the use of 50% glycerol is recommended if storing aliquots in -20°C for long term use (up to 1 year) Short term (less than 1 week): 4°C. Avoid freeze-thaw cycles.

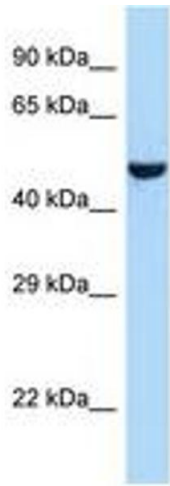


Image 1.