



[Go to Product page](#)

Datasheet for ABIN6748015  
**anti-STH antibody (AA 61-110)**

1 Image

Overview

Quantity:	100 µL
Target:	STH
Binding Specificity:	AA 61-110
Reactivity:	Human
Host:	Rabbit
Clonality:	Polyclonal
Conjugate:	This STH antibody is un-conjugated
Application:	Western Blotting (WB)

Product Details

Immunogen:	Synthetic peptide located between aa61-110 of human STH (Q8IWL8, NP_001007533). Percent identity by BLAST analysis: Human, Gorilla (100%), Chimpanzee, Orangutan (92%).  Type of Immunogen: Synthetic peptide
Specificity:	Human STH
Predicted Reactivity:	Percent identity by BLAST analysis: Human (100%).
Purification:	Immunoaffinity purified

Target Details

Target:	STH
Alternative Name:	STH ( <a href="#">STH Products</a> )

## Target Details

---

Background:	Name/Gene ID: STH
	Synonyms: STH, MAPTIT, Saitohin
Gene ID:	246744
NCBI Accession:	<a href="#">NP_001007533</a>
UniProt:	<a href="#">Q8IWL8</a>

## Application Details

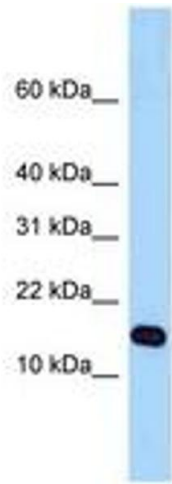
---

Application Notes:	Optimal working dilution should be determined by the investigator.
Comment:	Target Species of Antibody: Human
Restrictions:	For Research Use only

## Handling

---

Format:	Lyophilized
Reconstitution:	Distilled water
Concentration:	Lot specific
Buffer:	Lyophilized from PBS with 2 % sucrose
Handling Advice:	Avoid repeat freeze-thaw cycles.
Storage:	4 °C, -20 °C
Storage Comment:	Long term: -20°C, the use of 50% glycerol is recommended if storing aliquots in -20°C for long term use (up to 1 year) Short term (less than 1 week): 4°C. Avoid freeze-thaw cycles.



**Image 1.**