

Datasheet for ABIN6748018
anti-Crk antibody (AA 182-231)



[Go to Product page](#)

1 Image

Overview

Quantity:	100 µL
Target:	Crk (CRK)
Binding Specificity:	AA 182-231
Reactivity:	Human, Mouse, Rat, Monkey, Dog, Cow, Rabbit, Guinea Pig, Horse, Hamster, Bat, Xenopus laevis
Host:	Rabbit
Clonality:	Polyclonal
Conjugate:	This Crk antibody is un-conjugated
Application:	Western Blotting (WB)

Product Details

Immunogen:	Synthetic peptide located between aa182-231 of human CRK (P46108, NP_058431). Percent identity by BLAST analysis: Human, Chimpanzee, Gorilla, Gibbon, Galago, Marmoset, Mouse, Rat, Dog, Bovine, Bat, Hamster, Elephant, Rabbit, Horse, Opossum, Guinea pig, Platypus, Xenopus (100%), Turkey, Zebra finch, Chicken (90%). Type of Immunogen: Synthetic peptide
Specificity:	Human CRK
Predicted Reactivity:	Percent identity by BLAST analysis: Human, Mouse, Rat, Dog, Bovine, Horse, Guinea pig, Xenopus (100%) Chicken (90%).
Purification:	Immunoaffinity purified

Target Details

Target:	Crk (CRK)
Alternative Name:	CRK (CRK Products)
Background:	Name/Gene ID: CRK Synonyms: CRK, Adapter molecule crk, CRKII, Proto-oncogene c-Crk, p38
Gene ID:	1398
NCBI Accession:	NP_058431
UniProt:	P46108
Pathways:	Neurotrophin Signaling Pathway , CXCR4-mediated Signaling Events , Signaling of Hepatocyte Growth Factor Receptor

Application Details

Application Notes:	Optimal working dilution should be determined by the investigator.
Comment:	Target Species of Antibody: Human
Restrictions:	For Research Use only

Handling

Format:	Lyophilized
Reconstitution:	Distilled water
Concentration:	Lot specific
Buffer:	Lyophilized from PBS with 2 % sucrose
Handling Advice:	Avoid repeat freeze-thaw cycles.
Storage:	4 °C,-20 °C
Storage Comment:	Long term: -20°C, the use of 50% glycerol is recommended if storing aliquots in -20°C for long term use (up to 1 year) Short term (less than 1 week): 4°C. Avoid freeze-thaw cycles.

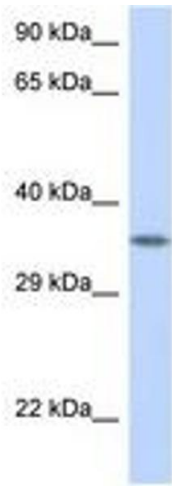


Image 1.