



Datasheet for ABIN6748019
anti-14-3-3 gamma antibody (AA 40-89)



[Go to Product page](#)

1 Image

Overview

Quantity:	100 µL
Target:	14-3-3 gamma (YWHAG1)
Binding Specificity:	AA 40-89
Reactivity:	Human, Mouse, Rat, Zebrafish (Danio rerio), Cow, Chicken, Dog, Guinea Pig, Horse, Rabbit, Bat, Monkey, Pig, Xenopus laevis
Host:	Rabbit
Clonality:	Polyclonal
Conjugate:	This 14-3-3 gamma antibody is un-conjugated
Application:	Western Blotting (WB)

Product Details

Immunogen:	Synthetic peptide located between aa40-89 of mouse Ywhag (P61982, NP_061359). Percent identity by BLAST analysis: Human, Chimpanzee, Gorilla, Orangutan, Gibbon, Monkey, Galago, Marmoset, Mouse, Rat, Dog, Bovine, Bat, Elephant, Panda, Rabbit, Horse, Pig, Opossum, Guinea pig, Turkey, Zebra finch, Chicken, Xenopus, Trout, Catfish, Salmon, Zebrafish (100%). Type of Immunogen: Synthetic peptide
Specificity:	Mouse YWHAG / 14-3-3 Gamma
Predicted Reactivity:	Percent identity by BLAST analysis: Human, Mouse, Dog, Bovine, Chicken, Zebrafish (100%).
Purification:	Immunoaffinity purified

Target Details

Target:	14-3-3 gamma (YWHAG1)
Alternative Name:	YWHAG / 14-3-3 Gamma (YWHAG1 Products)
Background:	Name/Gene ID: YWHAG Synonyms: YWHAG, 14-3-3GAMMA, 14-3-3 gamma, 14-3-3 protein gamma, KCIP-1
Gene ID:	7532
NCBI Accession:	NP_061359
UniProt:	P61981
Pathways:	Myometrial Relaxation and Contraction, M Phase

Application Details

Application Notes:	Optimal working dilution should be determined by the investigator.
Comment:	Target Species of Antibody: Mouse
Restrictions:	For Research Use only

Handling

Format:	Lyophilized
Reconstitution:	Distilled water
Concentration:	Lot specific
Buffer:	Lyophilized from PBS with 2 % sucrose
Handling Advice:	Avoid repeat freeze-thaw cycles.
Storage:	4 °C,-20 °C
Storage Comment:	Long term: -20°C, the use of 50% glycerol is recommended if storing aliquots in -20°C for long term use (up to 1 year) Short term (less than 1 week): 4°C. Avoid freeze-thaw cycles.

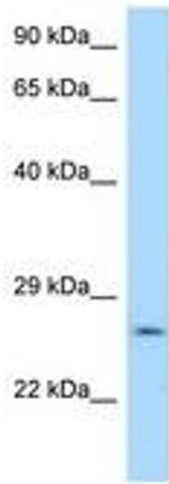


Image 1.