

## Datasheet for ABIN6748031 anti-RHOU antibody (AA 41-90)



[Go to Product page](#)

### 1 Image

#### Overview

Quantity:	100 µL
Target:	RHOU
Binding Specificity:	AA 41-90
Reactivity:	Human, Mouse, Cow, Dog, Rabbit, Monkey
Host:	Rabbit
Clonality:	Polyclonal
Conjugate:	This RHOU antibody is un-conjugated
Application:	Western Blotting (WB)

#### Product Details

Immunogen:	Synthetic peptide located between aa41-90 of mouse Rhou (Q9EQT3, NP_598716). Percent identity by BLAST analysis: Human, Gibbon, Monkey, Galago, Marmoset, Mouse, Elephant, Dog, Bovine, Rabbit, Opossum, Lizard (100%), Bat, Zebra finch, Xenopus, Zebrafish (92%), Turkey, Chicken, Sea squirt, Slime mold (85%), Rat (78%).  Type of Immunogen: Synthetic peptide
Specificity:	Mouse RHOU
Predicted Reactivity:	Percent identity by BLAST analysis: Human, Mouse, Dog, Bovine, Rabbit (100%) Xenopus, Zebrafish (92%).
Purification:	Immunoaffinity purified

## Target Details

Target:	RHOU
Alternative Name:	ARHU / RHOU ( <a href="#">RHOU Products</a> )
Background:	<p>Name/Gene ID: RHOU</p> <p>Family: Ras GTPase superfamily IPR001806</p> <p>Synonyms: RHOU, ARHU, CDC42-like GTPase 1, CDC42L1, DJ646B12.2, FJ646B12.2, G28K, GTP-binding protein-like 1, GTP-binding protein SB128, HG28K, GTP-binding protein like 1, Ras homolog family member U, Rho GTPase-like protein ARHU, Ryu GTPase, Ras-like gene family member U, Wnt-1 responsive Cdc42 homolog, WRCH-1, WRCH1</p>
Gene ID:	58480
NCBI Accession:	<a href="#">NP_598716</a>
UniProt:	<a href="#">Q7L0Q8</a>

## Application Details

Application Notes:	Optimal working dilution should be determined by the investigator.
Comment:	Target Species of Antibody: Mouse
Restrictions:	For Research Use only

## Handling

Format:	Lyophilized
Reconstitution:	Distilled water
Concentration:	Lot specific
Buffer:	Lyophilized from PBS with 2 % sucrose
Handling Advice:	Avoid repeat freeze-thaw cycles.
Storage:	4 °C, -20 °C
Storage Comment:	<p>Long term: -20°C, the use of 50% glycerol is recommended if storing aliquots in -20°C for long term use (up to 1 year)</p> <p>Short term (less than 1 week): 4°C. Avoid freeze-thaw cycles.</p>

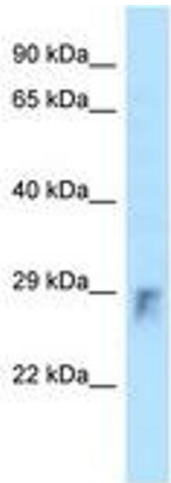


Image 1.