



[Go to Product page](#)

Datasheet for ABIN6748034
anti-RAB13 antibody (AA 91-140)

1 Image

Overview

Quantity:	100 µL
Target:	RAB13
Binding Specificity:	AA 91-140
Reactivity:	Human, Mouse, Rat, Horse, Rabbit, Cow, Zebrafish (Danio rerio), Guinea Pig, Hamster, Monkey, Pig, Bat
Host:	Rabbit
Clonality:	Polyclonal
Conjugate:	This RAB13 antibody is un-conjugated
Application:	Western Blotting (WB)

Product Details

Immunogen:	Synthetic peptide located between aa91-140 of mouse Rab13 (Q9DD03, NP_080953). Percent identity by BLAST analysis: Human, Gorilla, Gibbon, Monkey, Marmoset, Mouse, Rat, Hamster, Elephant, Panda, Bovine, Bat, Rabbit, Horse, Pig, Opossum, Guinea pig (100%), Galago, Xenopus (92%), Zebrafish (85%). Type of Immunogen: Synthetic peptide
Specificity:	Mouse RAB13
Predicted Reactivity:	Percent identity by BLAST analysis: Human, Mouse, Rat, Bovine, Rabbit, Pig, Guinea pig (100%) Zebrafish (85%).
Purification:	Immunoaffinity purified

Target Details

Target:	RAB13
Alternative Name:	RAB13 (RAB13 Products)
Background:	Name/Gene ID: RAB13 Subfamily: RAS oncogene Family: Ras GTPase superfamily IPR001806 Synonyms: RAB13, GIG4, RAS-associated protein RAB13, Ras-related protein Rab-13
Gene ID:	5872
NCBI Accession:	NP_080953
UniProt:	P51153
Pathways:	Cell-Cell Junction Organization

Application Details

Application Notes:	Optimal working dilution should be determined by the investigator.
Comment:	Target Species of Antibody: Mouse
Restrictions:	For Research Use only

Handling

Format:	Lyophilized
Reconstitution:	Distilled water
Concentration:	Lot specific
Buffer:	Lyophilized from PBS with 2 % sucrose
Handling Advice:	Avoid repeat freeze-thaw cycles.
Storage:	4 °C, -20 °C
Storage Comment:	Long term: -20°C, the use of 50% glycerol is recommended if storing aliquots in -20°C for long term use (up to 1 year) Short term (less than 1 week): 4°C. Avoid freeze-thaw cycles.

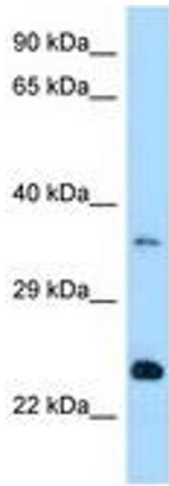


Image 1.