



[Go to Product page](#)

Datasheet for ABIN6748045
anti-AHCY antibody (AA 136-185)

1 Image

Overview

Quantity:	100 µL
Target:	AHCY
Binding Specificity:	AA 136-185
Reactivity:	Human, Mouse, Rat, Zebrafish (Danio rerio), Cow, Dog, Horse, Rabbit, Pig, Guinea Pig, Hamster, Monkey, Bat, Chicken
Host:	Rabbit
Clonality:	Polyclonal
Conjugate:	This AHCY antibody is un-conjugated
Application:	Western Blotting (WB)

Product Details

Immunogen:	Synthetic peptide located between aa136-185 of mouse Ahcy (P50247, NP_057870). Percent identity by BLAST analysis: Human, Gorilla, Monkey, Mouse, Rat, Hamster, Panda, Dog, Bovine, Bat, Rabbit, Horse, Pig, Guinea pig, Turkey, Chicken, Beetle (100%), Gibbon, Opossum, Platypus, Lizard, Xenopus, Stickleback, Mosquito, Slime mold, Nematode (92%), Salmon, Sea squirt, Drosophila (85%). Type of Immunogen: Synthetic peptide
Specificity:	Mouse AHCY
Predicted Reactivity:	Percent identity by BLAST analysis: Human, Mouse, Rat, Dog, Rabbit, Pig, Guinea pig, Chicken (100%) Zebrafish (92%).

Product Details

Purification: Immunoaffinity purified

Target Details

Target: AHCY

Alternative Name: SAHH / AHCY ([AHCY Products](#))

Background: Name/Gene ID: AHCY

Synonyms: AHCY, Adenosylhomocysteinase, AdoHcyase, SAHH

Gene ID: 191

NCBI Accession: [NP_057870](#)

UniProt: [P23526](#)

Application Details

Application Notes: Optimal working dilution should be determined by the investigator.

Comment: Target Species of Antibody: Mouse

Restrictions: For Research Use only

Handling

Format: Lyophilized

Reconstitution: Distilled water

Concentration: Lot specific

Buffer: Lyophilized from PBS with 2 % sucrose

Handling Advice: Avoid repeat freeze-thaw cycles.

Storage: 4 °C, -20 °C

Storage Comment: Long term: -20°C, the use of 50% glycerol is recommended if storing aliquots in -20°C for long term use (up to 1 year)

Short term (less than 1 week): 4°C. Avoid freeze-thaw cycles.

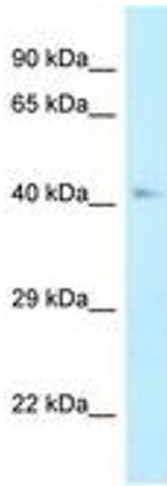


Image 1.