



[Go to Product page](#)

Datasheet for ABIN6748046
anti-FAM114A2 antibody (C-Term)

1 Image

Overview

Quantity:	100 µL
Target:	FAM114A2
Binding Specificity:	C-Term
Reactivity:	Human, Mouse, Horse, Cow, Rabbit, Dog, Guinea Pig, Hamster, Bat, Monkey, Chicken
Host:	Rabbit
Clonality:	Polyclonal
Conjugate:	This FAM114A2 antibody is un-conjugated
Application:	Western Blotting (WB)

Product Details

Immunogen:	Synthetic peptide from C-Terminus of mouse Fam114a2 (Q8VE88, NP_080618). Percent identity by BLAST analysis: Human, Gorilla, Gibbon, Monkey, Galago, Marmoset, Mouse, Hamster, Elephant, Panda, Dog, Bovine, Bat, Rabbit, Horse, Guinea pig, Turkey, Zebra finch, Chicken, Salmon (100%), Opossum, Platypus, Stickleback (92%), Beetle (85%), Xenopus (84%). Type of Immunogen: Synthetic peptide
Specificity:	Mouse Fam114a2
Predicted Reactivity:	Percent identity by BLAST analysis: Human, Dog, Bovine, Rabbit, Horse, Guinea pig, Chicken (100%).
Purification:	Immunoaffinity purified

Target Details

Target:	FAM114A2
Alternative Name:	Fam114a2 (FAM114A2 Products)
Background:	Name/Gene ID: Fam114a2 Synonyms: Fam114a2, RP23-206L21.2
Gene ID:	67726
NCBI Accession:	NP_080618
UniProt:	Q8VE88

Application Details

Application Notes:	Optimal working dilution should be determined by the investigator.
Comment:	Target Species of Antibody: Mouse
Restrictions:	For Research Use only

Handling

Format:	Lyophilized
Reconstitution:	Distilled water
Concentration:	Lot specific
Buffer:	Lyophilized from PBS with 2 % sucrose
Handling Advice:	Avoid repeat freeze-thaw cycles.
Storage:	4 °C, -20 °C
Storage Comment:	Long term: -20°C, the use of 50% glycerol is recommended if storing aliquots in -20°C for long term use (up to 1 year) Short term (less than 1 week): 4°C. Avoid freeze-thaw cycles.

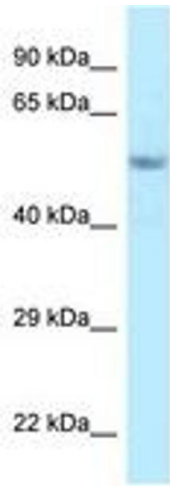


Image 1.