



[Go to Product page](#)

Datasheet for ABIN6748054  
**anti-PIGX antibody (C-Term)**

1 Image

Overview

Quantity:	100 µL
Target:	PIGX
Binding Specificity:	C-Term
Reactivity:	Human, Dog, Horse, Rabbit, Monkey
Host:	Rabbit
Clonality:	Polyclonal
Conjugate:	This PIGX antibody is un-conjugated
Application:	Western Blotting (WB)

Product Details

Immunogen:	Synthetic peptide from C-Terminus of human PIGX (A8MSL3, NP_060331). Percent identity by BLAST analysis: Human, Chimpanzee, Gorilla, Gibbon, Marmoset (100%), Bovine (90%), Dog, Bat, Rabbit, Horse (84%).  Type of Immunogen: Synthetic peptide
Specificity:	Human PIGX
Predicted Reactivity:	Percent identity by BLAST analysis: Human (100%) Bovine (90%) Dog, Rabbit, Horse (84%).
Purification:	Immunoaffinity purified

Target Details

Target:	PIGX
---------	------

## Target Details

---

Alternative Name: [PIGX \(PIGX Products\)](#)

Background: Name/Gene ID: PIGX

Synonyms: PIGX, PIG-X

Gene ID: 54965

NCBI Accession: [NP\\_060331](#)

UniProt: [Q8TBF5](#)

Pathways: [Inositol Metabolic Process](#)

## Application Details

---

Application Notes: Optimal working dilution should be determined by the investigator.

Comment: Target Species of Antibody: Human

Restrictions: For Research Use only

## Handling

---

Format: Lyophilized

Reconstitution: Distilled water

Concentration: Lot specific

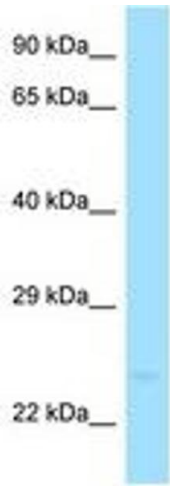
Buffer: Lyophilized from PBS with 2 % sucrose

Handling Advice: Avoid repeat freeze-thaw cycles.

Storage: 4 °C, -20 °C

Storage Comment: Long term: -20°C, the use of 50% glycerol is recommended if storing aliquots in -20°C for long term use (up to 1 year)

Short term (less than 1 week): 4°C. Avoid freeze-thaw cycles.



**Image 1.**