



[Go to Product page](#)

Datasheet for ABIN6748055
anti-LYG2 antibody (AA 35-84)

1 Image

Overview

Quantity:	100 µL
Target:	LYG2
Binding Specificity:	AA 35-84
Reactivity:	Human
Host:	Rabbit
Clonality:	Polyclonal
Conjugate:	This LYG2 antibody is un-conjugated
Application:	Western Blotting (WB)

Product Details

Immunogen:	Synthetic peptide located between aa35-84 of human LYG2 (Q86SG7, NP_783862). Percent identity by BLAST analysis: Human, Chimpanzee, Gorilla, Gibbon (100%), Monkey, Marmoset (92%). Type of Immunogen: Synthetic peptide
Specificity:	Human LYG2
Predicted Reactivity:	Percent identity by BLAST analysis: Human (100%).
Purification:	Immunoaffinity purified

Target Details

Target:	LYG2
---------	------

Target Details

Alternative Name: [LYG2 \(LYG2 Products\)](#)

Background: Name/Gene ID: LYG2

Synonyms: LYG2, LYGH, Lysozyme G-like 2, Lysozyme g-like protein 2

Gene ID: 254773

NCBI Accession: [NP_783862](#)

UniProt: [Q86SG7](#)

Application Details

Application Notes: Optimal working dilution should be determined by the investigator.

Comment: Target Species of Antibody: Human

Restrictions: For Research Use only

Handling

Format: Lyophilized

Reconstitution: Distilled water

Concentration: Lot specific

Buffer: Lyophilized from PBS with 2 % sucrose

Handling Advice: Avoid repeat freeze-thaw cycles.

Storage: 4 °C, -20 °C

Storage Comment: Long term: -20°C, the use of 50% glycerol is recommended if storing aliquots in -20°C for long term use (up to 1 year)
Short term (less than 1 week): 4°C. Avoid freeze-thaw cycles.

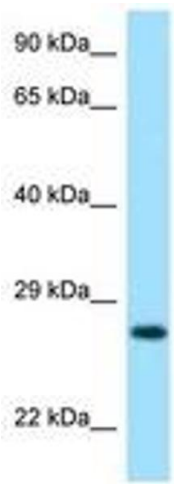


Image 1.