



[Go to Product page](#)

Datasheet for ABIN6748056
anti-LYG2 antibody (AA 99-148)

1 Image

Overview

| | |
|----------------------|-------------------------------------------------|
| Quantity: | 100 µL |
| Target: | LYG2 |
| Binding Specificity: | AA 99-148 |
| Reactivity: | Human, Cow, Dog, Horse, Mouse, Rabbit, Rat, Pig |
| Host: | Rabbit |
| Clonality: | Polyclonal |
| Conjugate: | This LYG2 antibody is un-conjugated |
| Application: | Western Blotting (WB) |

Product Details

| | |
|-----------------------|--------------------------------------------------------------------------------------------------------------------------------------------------------------------------------------------------------------------------------------------------------------------------------------|
| Immunogen: | Synthetic peptide located between aa99-148 of human LYG2 (Q86SG7, NP_783862). Percent identity by BLAST analysis: Human, Chimpanzee, Gorilla, Gibbon, Monkey (100%), Marmoset, Bat (92%), Mouse, Rat, Dog, Rabbit, Horse, Opossum (85%). Type of Immunogen: Synthetic peptide |
| Specificity: | Human LYG2 |
| Predicted Reactivity: | Percent identity by BLAST analysis: Human (100%) Mouse, Rat, Dog, Rabbit, Horse (85%). |
| Purification: | Immunoaffinity purified |

Target Details

| | |
|---------|------|
| Target: | LYG2 |
|---------|------|

Target Details

Alternative Name: [LYG2 \(LYG2 Products\)](#)

Background: Name/Gene ID: LYG2

Synonyms: LYG2, LYGH, Lysozyme G-like 2, Lysozyme g-like protein 2

Gene ID: 254773

NCBI Accession: [NP_783862](#)

UniProt: [Q86SG7](#)

Application Details

Application Notes: Optimal working dilution should be determined by the investigator.

Comment: Target Species of Antibody: Human

Restrictions: For Research Use only

Handling

Format: Lyophilized

Reconstitution: Distilled water

Concentration: Lot specific

Buffer: Lyophilized from PBS with 2 % sucrose

Handling Advice: Avoid repeat freeze-thaw cycles.

Storage: 4 °C,-20 °C

Storage Comment: Long term: -20°C, the use of 50% glycerol is recommended if storing aliquots in -20°C for long term use (up to 1 year)
Short term (less than 1 week): 4°C. Avoid freeze-thaw cycles.

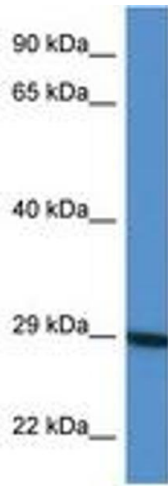


Image 1.