



[Go to Product page](#)

Datasheet for ABIN6748057  
**anti-PPT1 antibody (C-Term)**

1 Image

Overview

Quantity:	100 µL
Target:	PPT1
Binding Specificity:	C-Term
Reactivity:	Human, Mouse, Rat, Dog, Cow, Guinea Pig, Pig
Host:	Rabbit
Clonality:	Polyclonal
Conjugate:	This PPT1 antibody is un-conjugated
Application:	Western Blotting (WB)

Product Details

Immunogen:	Synthetic peptide from C-Terminus of human PPT1 (P50897, NP_000301). Percent identity by BLAST analysis: Human, Chimpanzee, Gorilla, Orangutan, Gibbon, Monkey, Rat, Dog (100%), Galago, Marmoset, Elephant, Bat, Rabbit, Horse (92%), Bovine (85%), Pig, Opossum, Guinea pig (84%), Mouse (76%).  Type of Immunogen: Synthetic peptide
Specificity:	Human PPT1
Predicted Reactivity:	Percent identity by BLAST analysis: Human, Dog (100%) Horse (92%) Bovine (85%) Pig, Guinea pig (84%).
Purification:	Immunoaffinity purified

## Target Details

---

Target:	PPT1
Alternative Name:	PPT1 / PPT ( <a href="#">PPT1 Products</a> )
Background:	Name/Gene ID: PPT1  Synonyms: PPT1, CLN1, Palmitoyl-protein hydrolase 1, Palmitoyl-protein thioesterase, INCL, PPT-1, PPT
Gene ID:	5538
NCBI Accession:	<a href="#">NP_000301</a>
UniProt:	<a href="#">P50897</a>
Pathways:	<a href="#">SARS-CoV-2 Protein Interactome</a>

## Application Details

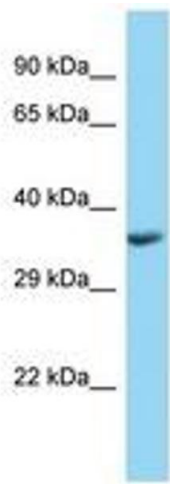
---

Application Notes:	Optimal working dilution should be determined by the investigator.
Comment:	Target Species of Antibody: Human
Restrictions:	For Research Use only

## Handling

---

Format:	Lyophilized
Reconstitution:	Distilled water
Concentration:	Lot specific
Buffer:	Lyophilized from PBS with 2 % sucrose
Handling Advice:	Avoid repeat freeze-thaw cycles.
Storage:	4 °C,-20 °C
Storage Comment:	Long term: -20°C, the use of 50% glycerol is recommended if storing aliquots in -20°C for long term use (up to 1 year)  Short term (less than 1 week): 4°C. Avoid freeze-thaw cycles.



**Image 1.**