



[Go to Product page](#)

Datasheet for ABIN6748067
anti-UBE2Q1 antibody (AA 190-239)

1 Image

Overview

Quantity:	100 µL
Target:	UBE2Q1
Binding Specificity:	AA 190-239
Reactivity:	Human, Mouse, Rat, Cow, Dog, Horse, Rabbit, Guinea Pig, Pig, Zebrafish (Danio rerio), Bat, Monkey
Host:	Rabbit
Clonality:	Polyclonal
Conjugate:	This UBE2Q1 antibody is un-conjugated
Application:	Western Blotting (WB)

Product Details

Immunogen:	Synthetic peptide located between aa190-239 of human UBE2Q1 (Q7Z7E8, NP_060052). Percent identity by BLAST analysis: Human, Chimpanzee, Gorilla, Gibbon, Galago, Marmoset, Mouse, Rat, Dog, Bovine, Bat, Rabbit, Horse, Pig, Opossum, Guinea pig (100%), Monkey, Elephant, Xenopus, Zebrafish (85%). Type of Immunogen: Synthetic peptide
Specificity:	Human UBE2Q1
Predicted Reactivity:	Percent identity by BLAST analysis: Human, Mouse, Rat, Dog, Bovine, Rabbit, Horse, Pig (100%) Zebrafish (85%).
Purification:	Immunoaffinity purified

Target Details

Target:	UBE2Q1
Alternative Name:	UBE2Q1 (UBE2Q1 Products)
Background:	Name/Gene ID: UBE2Q1 Synonyms: UBE2Q1, NICE-5, NICE5, PRO3094, Protein NICE-5, Ubiquitin carrier protein Q1, Ubiquitin-protein ligase Q1, UBE2Q, GTAP
Gene ID:	55585
NCBI Accession:	NP_060052
UniProt:	Q7Z7E8

Application Details

Application Notes:	Optimal working dilution should be determined by the investigator.
Comment:	Target Species of Antibody: Human
Restrictions:	For Research Use only

Handling

Format:	Lyophilized
Reconstitution:	Distilled water
Concentration:	Lot specific
Buffer:	Lyophilized from PBS with 2 % sucrose
Handling Advice:	Avoid repeat freeze-thaw cycles.
Storage:	4 °C,-20 °C
Storage Comment:	Long term: -20°C, the use of 50% glycerol is recommended if storing aliquots in -20°C for long term use (up to 1 year) Short term (less than 1 week): 4°C. Avoid freeze-thaw cycles.

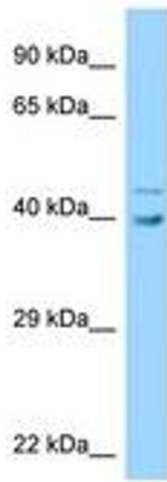


Image 1.