



Datasheet for ABIN6748073
anti-KIR2DL1 antibody (C-Term)



[Go to Product page](#)

1 Image

Overview

Quantity:	100 µL
Target:	KIR2DL1
Binding Specificity:	C-Term
Reactivity:	Human, Monkey
Host:	Rabbit
Clonality:	Polyclonal
Conjugate:	This KIR2DL1 antibody is un-conjugated
Application:	Western Blotting (WB)

Product Details

Immunogen:	Synthetic peptide from C-Terminus of human KIR2DL1 (P43626, NP_055033). Percent identity by BLAST analysis: Human, Gorilla, Orangutan, Gibbon, Monkey (100%), Chimpanzee (92%), Baboon (85%). Type of Immunogen: Synthetic peptide
Specificity:	Human KIR2DL1
Predicted Reactivity:	Percent identity by BLAST analysis: Human (100%).
Purification:	Immunoaffinity purified

Target Details

Target:	KIR2DL1
---------	---------

Target Details

Alternative Name:	KIR2DL1 / CD158a (KIR2DL1 Products)
Background:	Name/Gene ID: KIR2DL1 Family: Immunoglobulin Synonyms: KIR2DL1, 47.11, CI-42, MHC class I NK cell receptor, NKAT-1, p58 NK receptor CL-42/47.11, NKAT, NKAT1, p58.1, CD158A, CD158a antigen, Killer Ig receptor, KIR-K64, KIR221
Gene ID:	3802
NCBI Accession:	NP_055033
UniProt:	P43626

Application Details

Application Notes:	Optimal working dilution should be determined by the investigator.
Comment:	Target Species of Antibody: Human
Restrictions:	For Research Use only

Handling

Format:	Lyophilized
Reconstitution:	Distilled water
Concentration:	Lot specific
Buffer:	Lyophilized from PBS with 2 % sucrose
Handling Advice:	Avoid repeat freeze-thaw cycles.
Storage:	4 °C, -20 °C
Storage Comment:	Long term: -20°C, the use of 50% glycerol is recommended if storing aliquots in -20°C for long term use (up to 1 year) Short term (less than 1 week): 4°C. Avoid freeze-thaw cycles.

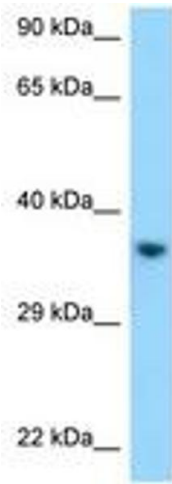


Image 1.