



[Go to Product page](#)

Datasheet for ABIN6748077  
**anti-SKIL antibody (AA 542-591)**

1 Image

Overview

Quantity:	100 µL
Target:	SKIL
Binding Specificity:	AA 542-591
Reactivity:	Human, Rat, Cow, Guinea Pig, Pig, Monkey, Bat, Hamster
Host:	Rabbit
Clonality:	Polyclonal
Conjugate:	This SKIL antibody is un-conjugated
Application:	Western Blotting (WB)

Product Details

Immunogen:	Synthetic peptide located between aa542-591 of rat Skil (D3ZWL1). Percent identity by BLAST analysis: Human, Gorilla, Orangutan, Gibbon, Monkey, Marmoset, Rat, Hamster, Elephant, Bovine, Bat, Pig, Guinea pig (100%), Galago, Mouse, Panda, Dog, Rabbit, Horse, Opossum, Turkey, Chicken, Lizard (92%), Zebra finch, Xenopus (85%).  Type of Immunogen: Synthetic peptide
Specificity:	Rat SKIL
Predicted Reactivity:	Percent identity by BLAST analysis: Human, Rat, Bovine, Pig, Guinea pig (100%) Mouse, Dog, Rabbit, Horse, Chicken (92%).
Purification:	Immunoaffinity purified

## Target Details

---

Target: SKIL

Alternative Name: SKIL / SNO / SnoN ([SKIL Products](#))

Background: Name/Gene ID: SKIL

Synonyms: SKIL, Ski-related oncogene, SnoI, SnoN, SKI-like oncogene, Sno, Ski-related oncogene snoN, Ski-related protein, Ski-like protein, SnoA

Gene ID: 6498

UniProt: [P12757](#)

Pathways: [Positive Regulation of Response to DNA Damage Stimulus](#)

## Application Details

---

Application Notes: Optimal working dilution should be determined by the investigator.

Comment: Target Species of Antibody: Rat

Restrictions: For Research Use only

## Handling

---

Format: Lyophilized

Reconstitution: Distilled water

Concentration: Lot specific

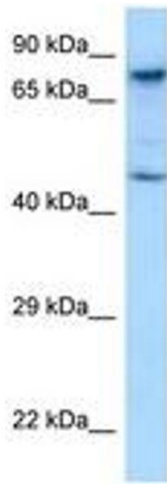
Buffer: Lyophilized from PBS with 2 % sucrose

Handling Advice: Avoid repeat freeze-thaw cycles.

Storage: 4 °C, -20 °C

Storage Comment: Long term: -20°C, the use of 50% glycerol is recommended if storing aliquots in -20°C for long term use (up to 1 year)

Short term (less than 1 week): 4°C. Avoid freeze-thaw cycles.



**Image 1.**