



[Go to Product page](#)

Datasheet for ABIN6748079
anti-Vangl1 antibody (N-Term)

1 Image

Overview

Quantity:	100 µL
Target:	Vangl1
Binding Specificity:	N-Term
Reactivity:	Human, Mouse, Rat, Cow, Dog, Pig, Rabbit, Guinea Pig
Host:	Rabbit
Clonality:	Polyclonal
Conjugate:	This Vangl1 antibody is un-conjugated
Application:	Western Blotting (WB)

Product Details

Immunogen:	Synthetic peptide from N-Terminus of human VANGL1 (Q8TAA9, NP_620409). Percent identity by BLAST analysis: Human, Chimpanzee, Gorilla, Gibbon, Mouse, Rat, Elephant, Dog, Bovine, Rabbit, Guinea pig (100%), Marmoset, Hamster, Horse (92%), Pig (85%). Type of Immunogen: Synthetic peptide
Specificity:	Human VANGL1
Predicted Reactivity:	Percent identity by BLAST analysis: Mouse, Rat, Dog, Bovine, Rabbit (100%) Horse (92%) Pig (85%).
Purification:	Immunoaffinity purified

Target Details

Target:	Vangl1
Alternative Name:	VANGL1 (Vangl1 Products)
Background:	Name/Gene ID: VANGL1 Synonyms: VANGL1, KITENIN, STB2, LPP2, STBM2, Van Gogh-like protein 1, Loop-tail protein 2 homolog, Strabismus 2, Vang-like protein 1
Gene ID:	81839
NCBI Accession:	NP_620409
UniProt:	Q8TAA9
Pathways:	WNT Signaling

Application Details

Application Notes:	Optimal working dilution should be determined by the investigator.
Comment:	Target Species of Antibody: Human
Restrictions:	For Research Use only

Handling

Format:	Lyophilized
Reconstitution:	Distilled water
Concentration:	Lot specific
Buffer:	Lyophilized from PBS with 2 % sucrose
Handling Advice:	Avoid repeat freeze-thaw cycles.
Storage:	4 °C,-20 °C
Storage Comment:	Long term: -20°C, the use of 50% glycerol is recommended if storing aliquots in -20°C for long term use (up to 1 year) Short term (less than 1 week): 4°C. Avoid freeze-thaw cycles.

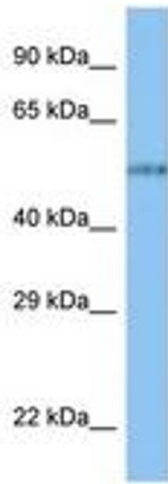


Image 1.