



[Go to Product page](#)

Datasheet for ABIN6748083

anti-PRRG4 antibody (AA 21-70)

1 Image

Overview

Quantity:	100 µL
Target:	PRRG4
Binding Specificity:	AA 21-70
Reactivity:	Human, Mouse, Zebrafish (Danio rerio), Cow, Guinea Pig, Bat, Monkey
Host:	Rabbit
Clonality:	Polyclonal
Conjugate:	This PRRG4 antibody is un-conjugated
Application:	Western Blotting (WB)

Product Details

Immunogen:	Synthetic peptide located between aa21-70 of mouse Prrg4 (Q8BGN6, NP_848810). Percent identity by BLAST analysis: Human, Gibbon, Galago, Marmoset, Mouse, Elephant, Bovine, Bat, Guinea pig (100%), Rat, Panda, Dog, Rabbit, Horse, Pig, Opossum, Platypus (92%), Gorilla (91%), Monkey, Zebrafish (85%). Type of Immunogen: Synthetic peptide
Specificity:	Mouse PRRG4
Predicted Reactivity:	Percent identity by BLAST analysis: Mouse, Rat, Dog, Bovine, Rabbit, Horse, Pig (92%) Zebrafish (85%).
Purification:	Immunoaffinity purified

Target Details

Target: PRRG4

Alternative Name: PRRG4 ([PRRG4 Products](#))

Background: Name/Gene ID: PRRG4

Synonyms: PRRG4, PRGP4, Proline-rich Gla protein 4, TMG4

Gene ID: 79056

NCBI Accession: [NP_848810](#)

UniProt: [Q9BZD6](#)

Application Details

Application Notes: Optimal working dilution should be determined by the investigator.

Comment: Target Species of Antibody: Mouse

Restrictions: For Research Use only

Handling

Format: Lyophilized

Reconstitution: Distilled water

Concentration: Lot specific

Buffer: Lyophilized from PBS with 2 % sucrose

Handling Advice: Avoid repeat freeze-thaw cycles.

Storage: 4 °C, -20 °C

Storage Comment: Long term: -20°C, the use of 50% glycerol is recommended if storing aliquots in -20°C for long term use (up to 1 year)

Short term (less than 1 week): 4°C. Avoid freeze-thaw cycles.

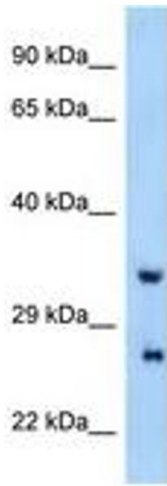


Image 1.