



[Go to Product page](#)

Datasheet for ABIN6748091
anti-LUM antibody (AA 59-108)

1 Image

Overview

Quantity:	100 µL
Target:	LUM
Binding Specificity:	AA 59-108
Reactivity:	Human, Mouse, Rat, Dog, Horse, Guinea Pig, Monkey
Host:	Rabbit
Clonality:	Polyclonal
Conjugate:	This LUM antibody is un-conjugated
Application:	Western Blotting (WB)

Product Details

Immunogen:	Synthetic peptide located between aa59-108 of mouse Lum (P51885, NP_032550). Percent identity by BLAST analysis: Human, Chimpanzee, Gorilla, Orangutan, Gibbon, Monkey, Marmoset, Mouse, Rat, Elephant, Panda, Dog, Horse, Guinea pig (100%), Galago, Bovine, Bat, Rabbit, Pig (92%). Type of Immunogen: Synthetic peptide
Specificity:	Mouse LUM / Lumican
Predicted Reactivity:	Percent identity by BLAST analysis: Human, Mouse, Rat, Dog, Horse (100%) Bovine, Rabbit, Pig (92%).
Purification:	Immunoaffinity purified

Target Details

Target:	LUM
Alternative Name:	Lumican (LUM Products)
Background:	Name/Gene ID: LUM Synonyms: LUM, LDC, Lumican, KSPG lumican, Lumican proteoglycan, SLRR2D
Gene ID:	4060
NCBI Accession:	NP_032550
UniProt:	P51884
Pathways:	Glycosaminoglycan Metabolic Process

Application Details

Application Notes:	Optimal working dilution should be determined by the investigator.
Comment:	Target Species of Antibody: Mouse
Restrictions:	For Research Use only

Handling

Format:	Lyophilized
Reconstitution:	Distilled water
Concentration:	Lot specific
Buffer:	Lyophilized from PBS with 2 % sucrose
Handling Advice:	Avoid repeat freeze-thaw cycles.
Storage:	4 °C,-20 °C
Storage Comment:	Long term: -20°C, the use of 50% glycerol is recommended if storing aliquots in -20°C for long term use (up to 1 year) Short term (less than 1 week): 4°C. Avoid freeze-thaw cycles.

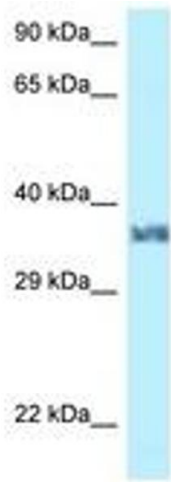


Image 1.