



[Go to Product page](#)

Datasheet for ABIN6748092
anti-OFD1 antibody (N-Term)

1 Image

Overview

Quantity:	100 µL
Target:	OFD1
Binding Specificity:	N-Term
Reactivity:	Human, Mouse, Rat, Dog, Zebrafish (Danio rerio), Guinea Pig, Horse, Pig, Monkey
Host:	Rabbit
Clonality:	Polyclonal
Conjugate:	This OFD1 antibody is un-conjugated
Application:	Western Blotting (WB)

Product Details

Immunogen:	Synthetic peptide from N-Terminus of rat Ofd1 (D3ZUD5, NP_001100431). Percent identity by BLAST analysis: Human, Gorilla, Gibbon, Monkey, Marmoset, Mouse, Rat, Dog, Horse, Pig, Guinea pig (100%), Galago, Elephant, Bovine, Bat (92%), Stickleback (91%), Opossum, Turkey, Chicken, Platypus (85%). Type of Immunogen: Synthetic peptide
Specificity:	Rat OFD1
Predicted Reactivity:	Percent identity by BLAST analysis: Human, Mouse, Rat, Dog, Horse, Pig, Guinea pig (100%) Bovine (92%) Chicken (85%).
Purification:	Immunoaffinity purified

Target Details

Target:	OFD1
Alternative Name:	OFD1 (OFD1 Products)
Background:	Name/Gene ID: OFD1 Synonyms: OFD1, 71-7A, JBTS10, Oral-facial-digital syndrome 1, CXorf5, Protein 71-7A, SGBS2
Gene ID:	8481
NCBI Accession:	NP_001100431
Pathways:	M Phase

Application Details

Application Notes:	Optimal working dilution should be determined by the investigator.
Comment:	Target Species of Antibody: Rat
Restrictions:	For Research Use only

Handling

Format:	Lyophilized
Reconstitution:	Distilled water
Concentration:	Lot specific
Buffer:	Lyophilized from PBS with 2 % sucrose
Handling Advice:	Avoid repeat freeze-thaw cycles.
Storage:	4 °C, -20 °C
Storage Comment:	Long term: -20°C, the use of 50% glycerol is recommended if storing aliquots in -20°C for long term use (up to 1 year) Short term (less than 1 week): 4°C. Avoid freeze-thaw cycles.

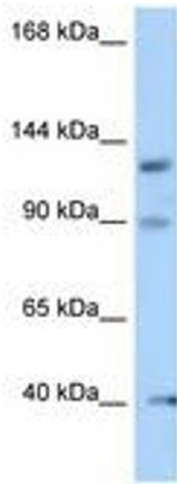


Image 1.