



[Go to Product page](#)

Datasheet for ABIN6748095  
**anti-XPA antibody (C-Term)**

1 Image

### Overview

Quantity:	100 µL
Target:	XPA
Binding Specificity:	C-Term
Reactivity:	Human, Mouse, Rat, Dog, Cow, Monkey, Pig, Bat
Host:	Rabbit
Clonality:	Polyclonal
Conjugate:	This XPA antibody is un-conjugated
Application:	Western Blotting (WB)

### Product Details

Immunogen:	Synthetic peptide from C-Terminus of human XPA (P23025, NP_000371). Percent identity by BLAST analysis: Human, Chimpanzee, Gorilla, Monkey, Marmoset, Mouse, Panda, Dog, Bat, Pig (100%), Horse (92%), Galago, Rat, Bovine, Opossum (85%).  Type of Immunogen: Synthetic peptide
Specificity:	Human XPA
Predicted Reactivity:	Percent identity by BLAST analysis: Human, Mouse, Dog (100%) Horse (92%) Rat, Bovine (85%).
Purification:	Immunoaffinity purified

### Target Details

Target:	XPA
---------	-----

## Target Details

---

Alternative Name:	<a href="#">XPA (XPA Products)</a>
Background:	Name/Gene ID: XPA  Synonyms: XPA, XP1, XPAC, Excision repair-controlling
Gene ID:	7507
NCBI Accession:	<a href="#">NP_000371</a>
UniProt:	<a href="#">P23025</a>
Pathways:	<a href="#">DNA Damage Repair</a>

## Application Details

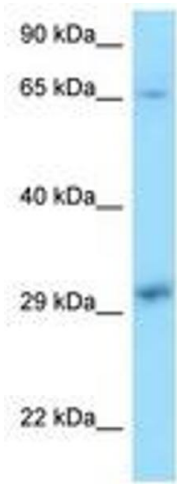
---

Application Notes:	Optimal working dilution should be determined by the investigator.
Comment:	Target Species of Antibody: Human
Restrictions:	For Research Use only

## Handling

---

Format:	Lyophilized
Reconstitution:	Distilled water
Concentration:	Lot specific
Buffer:	Lyophilized from PBS with 2 % sucrose
Handling Advice:	Avoid repeat freeze-thaw cycles.
Storage:	4 °C, -20 °C
Storage Comment:	Long term: -20°C, the use of 50% glycerol is recommended if storing aliquots in -20°C for long term use (up to 1 year) Short term (less than 1 week): 4°C. Avoid freeze-thaw cycles.



**Image 1.**