



[Go to Product page](#)

Datasheet for ABIN6748098  
**anti-AZI2 antibody (AA 69-118)**

1 Image

Overview

Quantity:	100 µL
Target:	AZI2
Binding Specificity:	AA 69-118
Reactivity:	Human, Rat, Mouse, Rabbit, Horse, Dog, Guinea Pig, Cow, Monkey
Host:	Rabbit
Clonality:	Polyclonal
Conjugate:	This AZI2 antibody is un-conjugated
Application:	Western Blotting (WB)

Product Details

Immunogen:	Synthetic peptide located between aa69-118 of human AZI2 (C9JB40, NP_001127904). Percent identity by BLAST analysis: Human, Chimpanzee, Gorilla, Orangutan, Monkey, Marmoset, Mouse, Rat, Elephant, Panda, Dog, Bovine, Rabbit, Horse, Guinea pig, Platypus (100%), Gibbon, Opossum, Chicken (92%), Lizard (86%), Turkey (85%).  Type of Immunogen: Synthetic peptide
Specificity:	Human AZI2 / NAP1
Predicted Reactivity:	Percent identity by BLAST analysis: Human, Mouse, Rat, Dog, Bovine, Rabbit, Horse, Guinea pig (100%) Chicken (92%).
Purification:	Immunoaffinity purified

## Target Details

---

Target:	AZI2
Alternative Name:	AZI2 / NAP1 ( <a href="#">AZI2 Products</a> )
Background:	Name/Gene ID: AZI2  Synonyms: AZI2, 5-azacytidine induced 2, 5-azacytidine induced gene 2, Nak-associated protein 1, NAP1, TILP, AZ2
Gene ID:	64343
NCBI Accession:	<a href="#">NP_001127904</a>
UniProt:	<a href="#">Q9H6S1</a>

## Application Details

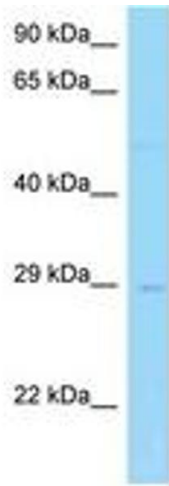
---

Application Notes:	Optimal working dilution should be determined by the investigator.
Comment:	Target Species of Antibody: Human
Restrictions:	For Research Use only

## Handling

---

Format:	Lyophilized
Reconstitution:	Distilled water
Concentration:	Lot specific
Buffer:	Lyophilized from PBS with 2 % sucrose
Handling Advice:	Avoid repeat freeze-thaw cycles.
Storage:	4 °C, -20 °C
Storage Comment:	Long term: -20°C, the use of 50% glycerol is recommended if storing aliquots in -20°C for long term use (up to 1 year)  Short term (less than 1 week): 4°C. Avoid freeze-thaw cycles.



**Image 1.**