

Datasheet for ABIN6748101
anti-HLA-E antibody (AA 158-207)



[Go to Product page](#)

1 Image

Overview

Quantity:	100 µL
Target:	HLA-E
Binding Specificity:	AA 158-207
Reactivity:	Human
Host:	Rabbit
Clonality:	Polyclonal
Conjugate:	This HLA-E antibody is un-conjugated
Application:	Western Blotting (WB)

Product Details

Immunogen:	Synthetic peptide located between aa158-207 of human HLA-E (P13747, NP_005507). Percent identity by BLAST analysis: Human (100%), Chimpanzee (92%), Orangutan (85%). Type of Immunogen: Synthetic peptide
Specificity:	Human HLA-E
Predicted Reactivity:	Percent identity by BLAST analysis: Human (100%).
Purification:	Immunoaffinity purified

Target Details

Target:	HLA-E
Alternative Name:	HLA-E (HLA-E Products)

Target Details

Background:	Name/Gene ID: HLA-E Synonyms: HLA-E, EA2.1, HLAE, MHC HLA-E alpha-2.1, MHC HLA-E alpha-1, EA1.2, HLA-6.2, MHC class I antigen E, QA1
Gene ID:	3133
NCBI Accession:	NP_005507
UniProt:	P13747
Pathways:	Regulation of Leukocyte Mediated Immunity , Positive Regulation of Immune Effector Process , Human Leukocyte Antigen (HLA) in Adaptive Immune Response

Application Details

Application Notes:	Optimal working dilution should be determined by the investigator.
Comment:	Target Species of Antibody: Human
Restrictions:	For Research Use only

Handling

Format:	Lyophilized
Reconstitution:	Distilled water
Concentration:	Lot specific
Buffer:	Lyophilized from PBS with 2 % sucrose
Handling Advice:	Avoid repeat freeze-thaw cycles.
Storage:	4 °C, -20 °C
Storage Comment:	Long term: -20°C, the use of 50% glycerol is recommended if storing aliquots in -20°C for long term use (up to 1 year) Short term (less than 1 week): 4°C. Avoid freeze-thaw cycles.

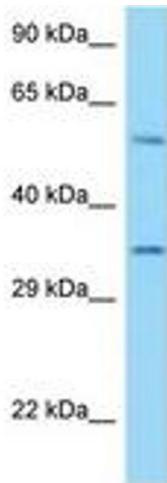


Image 1.