



[Go to Product page](#)

Datasheet for ABIN6748107

## anti-Actin-Like 8 antibody (AA 194-243)

### 1 Image

#### Overview

|                      |   |
|----------------------|---|
| Quantity:            | 100 µL                                      |
| Target:              | Actin-Like 8 (ACTL8)                        |
| Binding Specificity: | AA 194-243                                  |
| Reactivity:          | Human                                       |
| Host:                | Rabbit                                      |
| Clonality:           | Polyclonal                                  |
| Conjugate:           | This Actin-Like 8 antibody is un-conjugated |
| Application:         | Western Blotting (WB)                       |

#### Product Details

Immunogen: Synthetic peptide located between aa194-243 of human ACTL8 (Q9H568, NP\_110439). Percent identity by BLAST analysis: Human, Gorilla (100%), Gibbon, Monkey (85%).

Type of Immunogen: Synthetic peptide

Specificity: Human ACTL8

Predicted Reactivity: Percent identity by BLAST analysis: Human (100%).

Purification: Immunoaffinity purified

#### Target Details

Target: Actin-Like 8 (ACTL8)

Alternative Name: ACTL8 ([ACTL8 Products](#))

## Target Details

---

|                 |  |
|-----------------|--|
| Background:     | Name/Gene ID: ACTL8<br><br>Synonyms: ACTL8, Actin like protein, Actin-like 8, CT57, Actin-like protein 8, Cancer/testis antigen 57 |
| Gene ID:        | 81569  |
| NCBI Accession: | <a href="#">NP_110439</a>  |
| UniProt:        | <a href="#">Q9H568</a>   |

## Application Details

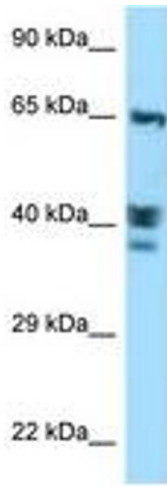
---

|                    |  |
|--------------------|--|
| Application Notes: | Optimal working dilution should be determined by the investigator. |
| Comment:           | Target Species of Antibody: Human                                  |
| Restrictions:      | For Research Use only  |

## Handling

---

|                  |   |
|------------------|---|
| Format:          | Lyophilized   |
| Reconstitution:  | Distilled water   |
| Concentration:   | Lot specific  |
| Buffer:          | Lyophilized from PBS with 2 % sucrose   |
| Handling Advice: | Avoid repeat freeze-thaw cycles.  |
| Storage:         | 4 °C,-20 °C   |
| Storage Comment: | Long term: -20°C, the use of 50% glycerol is recommended if storing aliquots in -20°C for long term use (up to 1 year)<br>Short term (less than 1 week): 4°C. Avoid freeze-thaw cycles. |



**Image 1.**