



[Go to Product page](#)

Datasheet for ABIN6748108

## anti-C16orf70 antibody (AA 255-304)

### 1 Image

#### Overview

Quantity:	100 µL
Target:	C16orf70
Binding Specificity:	AA 255-304
Reactivity:	Human, Mouse, Rat, Cow, Dog, Guinea Pig, Horse, Rabbit, Chicken, Monkey, Pig, Xenopus laevis
Host:	Rabbit
Clonality:	Polyclonal
Conjugate:	This C16orf70 antibody is un-conjugated
Application:	Western Blotting (WB)

#### Product Details

Immunogen:	Synthetic peptide located between aa255-304 of human C16orf70 (Q9BSU1, NP_079463). Percent identity by BLAST analysis: Human, Chimpanzee, Gibbon, Monkey, Galago, Marmoset, Mouse, Rat, Elephant, Panda, Dog, Bovine, Rabbit, Horse, Pig, Opossum, Guinea pig, Turkey, Zebra finch, Chicken, Platypus, Lizard, Xenopus, Salmon, Stickleback (100%), Gorilla, Nematode (92%), Drosophila (84%).  Type of Immunogen: Synthetic peptide
Specificity:	Human C16orf70
Predicted Reactivity:	Percent identity by BLAST analysis: Dog, Guinea pig (100%).
Purification:	Immunoaffinity purified

## Target Details

---

Target:	C16orf70
Alternative Name:	C16orf70 / LIN10 ( <a href="#">C16orf70 Products</a> )
Background:	Name/Gene ID: C16orf70  Synonyms: C16orf70, Lin-10 homolog, LIN10, LIN-10, C16orf6, UPF0183 protein C16orf70
Gene ID:	80262
NCBI Accession:	<a href="#">NP_079463</a>
UniProt:	<a href="#">Q9BSU1</a>

## Application Details

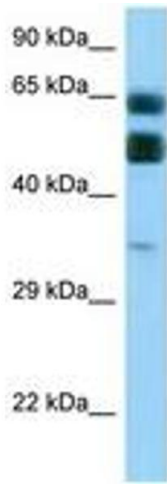
---

Application Notes:	Optimal working dilution should be determined by the investigator.
Comment:	Target Species of Antibody: Human
Restrictions:	For Research Use only

## Handling

---

Format:	Lyophilized
Reconstitution:	Distilled water
Concentration:	Lot specific
Buffer:	Lyophilized from PBS with 2 % sucrose
Handling Advice:	Avoid repeat freeze-thaw cycles.
Storage:	4 °C, -20 °C
Storage Comment:	Long term: -20°C, the use of 50% glycerol is recommended if storing aliquots in -20°C for long term use (up to 1 year) Short term (less than 1 week): 4°C. Avoid freeze-thaw cycles.



**Image 1.**