



[Go to Product page](#)

Datasheet for ABIN6748111  
**anti-CLPX antibody (C-Term)**

1 Image

Overview

Quantity:	100 µL
Target:	CLPX
Binding Specificity:	C-Term
Reactivity:	Human, Rat, Cow, Dog, Horse, Pig, Rabbit, Bat, Monkey
Host:	Rabbit
Clonality:	Polyclonal
Conjugate:	This CLPX antibody is un-conjugated
Application:	Western Blotting (WB)

Product Details

Immunogen:	Synthetic peptide from C-Terminus of human CLPX (076031, NP_006651). Percent identity by BLAST analysis: Human, Chimpanzee, Orangutan, Monkey, Galago, Marmoset, Elephant, Panda, Dog, Bovine, Bat, Horse, Pig, Opossum (100%), Gibbon, Mouse, Turkey, Zebra finch, Chicken (92%), Rat, Guinea pig, Platypus (85%).  Type of Immunogen: Synthetic peptide
Specificity:	Human CLPX
Predicted Reactivity:	Percent identity by BLAST analysis: Human, Dog, Bovine, Horse (100%) Mouse, Chicken (92%) Rat (85%).
Purification:	Immunoaffinity purified

## Target Details

---

Target:	CLPX
Alternative Name:	CLPX ( <a href="#">CLPX Products</a> )
Background:	Name/Gene ID: CLPX  Synonyms: CLPX
Gene ID:	10845
NCBI Accession:	<a href="#">NP_006651</a>
UniProt:	<a href="#">O76031</a>

## Application Details

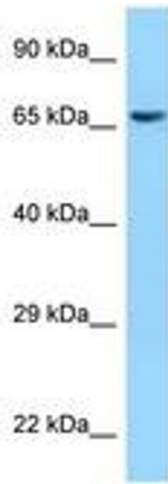
---

Application Notes:	Optimal working dilution should be determined by the investigator.
Comment:	Target Species of Antibody: Human
Restrictions:	For Research Use only

## Handling

---

Format:	Lyophilized
Reconstitution:	Distilled water
Concentration:	Lot specific
Buffer:	Lyophilized from PBS with 2 % sucrose
Handling Advice:	Avoid repeat freeze-thaw cycles.
Storage:	4 °C, -20 °C
Storage Comment:	Long term: -20°C, the use of 50% glycerol is recommended if storing aliquots in -20°C for long term use (up to 1 year)  Short term (less than 1 week): 4°C. Avoid freeze-thaw cycles.



**Image 1.**