



[Go to Product page](#)

Datasheet for ABIN6748115
anti-Translin antibody (AA 113-162)

1 Image

Overview

Quantity:	100 µL
Target:	Translin (TSN)
Binding Specificity:	AA 113-162
Reactivity:	Human, Mouse, Rat, Cow, Dog, Guinea Pig, Horse, Rabbit, Hamster, Monkey, Pig, Bat
Host:	Rabbit
Clonality:	Polyclonal
Conjugate:	This Translin antibody is un-conjugated
Application:	Western Blotting (WB)

Product Details

Immunogen:	Synthetic peptide located between aa113-162 of human TSN (Q15631, NP_004613). Percent identity by BLAST analysis: Human, Chimpanzee, Gorilla, Gibbon, Monkey, Galago, Marmoset, Mouse, Rat, Hamster, Elephant, Panda, Dog, Bovine, Bat, Rabbit, Horse, Pig, Guinea pig (100%), Orangutan, Zebrafish (92%), Opossum, Lizard (85%). Type of Immunogen: Synthetic peptide
Specificity:	Human TSN / Translin
Predicted Reactivity:	Percent identity by BLAST analysis: Human, Mouse, Rat, Dog, Bovine, Pig (100%) Zebrafish (92%).
Purification:	Immunoaffinity purified

Target Details

Target:	Translin (TSN)
Alternative Name:	TSN / Translin (TSN Products)
Background:	Name/Gene ID: TSN Synonyms: TSN, C3PO, BCLF-1, REHF-1, TBRBP, TRSLN, RCHF1, Translin
Gene ID:	7247
NCBI Accession:	NP_004613

Application Details

Application Notes:	Optimal working dilution should be determined by the investigator.
Comment:	Target Species of Antibody: Human
Restrictions:	For Research Use only

Handling

Format:	Lyophilized
Reconstitution:	Distilled water
Concentration:	Lot specific
Buffer:	Lyophilized from PBS with 2 % sucrose
Handling Advice:	Avoid repeat freeze-thaw cycles.
Storage:	4 °C,-20 °C
Storage Comment:	Long term: -20°C, the use of 50% glycerol is recommended if storing aliquots in -20°C for long term use (up to 1 year) Short term (less than 1 week): 4°C. Avoid freeze-thaw cycles.

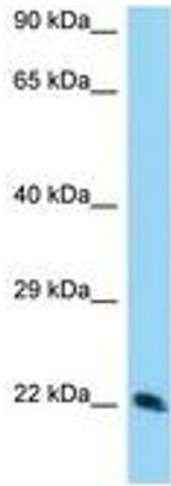


Image 1.