



## Datasheet for ABIN6748116 **anti-BAG1 antibody (AA 75-124)**



[Go to Product page](#)

### 1 Image

#### Overview

Quantity:	100 µL
Target:	BAG1
Binding Specificity:	AA 75-124
Reactivity:	Human, Dog, Cow, Pig, Zebrafish (Danio rerio)
Host:	Rabbit
Clonality:	Polyclonal
Conjugate:	This BAG1 antibody is un-conjugated
Application:	Western Blotting (WB)

#### Product Details

Immunogen:	Synthetic peptide located between aa75-124 of human BAG1 (Q99933-4, NP_001165886). Percent identity by BLAST analysis: Human, Chimpanzee, Gibbon (100%), Gorilla, Monkey, Elephant, Bat, Horse (92%), Marmoset, Dog, Bovine, Pig, Opossum, Zebrafish (85%).  Type of Immunogen: Synthetic peptide
Specificity:	Human Bag1
Predicted Reactivity:	Percent identity by BLAST analysis: Human (100%) Horse (92%) Dog, Bovine, Pig, Zebrafish (85%).
Purification:	Immunoaffinity purified

## Target Details

---

Target:	BAG1
Alternative Name:	BAG1 / BAG-1 ( <a href="#">BAG1 Products</a> )
Background:	Name/Gene ID: BAG1  Synonyms: BAG1, Bcl-2-associated athanogene 1, Bcl-2-binding protein, Bcl2 binding protein bag1, BCL2-associated athanogene, BAG-1, Bcl2 binding athanogene1, HAP, RAP46
Gene ID:	573
NCBI Accession:	<a href="#">NP_001165886</a>

## Application Details

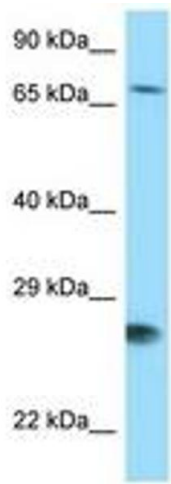
---

Application Notes:	Optimal working dilution should be determined by the investigator.
Comment:	Target Species of Antibody: Human
Restrictions:	For Research Use only

## Handling

---

Format:	Lyophilized
Reconstitution:	Distilled water
Concentration:	Lot specific
Buffer:	Lyophilized from PBS with 2 % sucrose
Handling Advice:	Avoid repeat freeze-thaw cycles.
Storage:	4 °C, -20 °C
Storage Comment:	Long term: -20°C, the use of 50% glycerol is recommended if storing aliquots in -20°C for long term use (up to 1 year) Short term (less than 1 week): 4°C. Avoid freeze-thaw cycles.



**Image 1.**