



[Go to Product page](#)

Datasheet for ABIN6748118
anti-Exonuclease 1 antibody (AA 74-123)

1 Image

Overview

Quantity:	100 µL
Target:	Exonuclease 1 (EX01)
Binding Specificity:	AA 74-123
Reactivity:	Human, Mouse, Rat, Guinea Pig, Rabbit, Zebrafish (Danio rerio), Monkey
Host:	Rabbit
Clonality:	Polyclonal
Conjugate:	This Exonuclease 1 antibody is un-conjugated
Application:	Western Blotting (WB)

Product Details

Immunogen:	Synthetic peptide located between aa74-123 of human EX01 (Q9UQ84, NP_003677). Percent identity by BLAST analysis: Human, Chimpanzee, Gorilla, Gibbon, Monkey, Marmoset, Mouse, Rat, Rabbit, Guinea pig (100%), Galago, Elephant, Panda, Dog, Bovine, Horse, Pig (92%), Zebra finch, Platypus, Stickleback, Zebrafish (85%), Opossum, Lizard (84%). Type of Immunogen: Synthetic peptide
Specificity:	Human EX01
Predicted Reactivity:	Percent identity by BLAST analysis: Human, Mouse, Rat, Rabbit, Guinea pig (100%) Bovine, Horse, Pig (92%) Zebrafish (85%).
Purification:	Immunoaffinity purified

Target Details

Target: Exonuclease 1 (EX01)

Alternative Name: EX01 ([EX01 Products](#))

Background: Name/Gene ID: EX01

Synonyms: EX01, Exonuclease 1, Exonuclease I, HEX1, HExoI, EXOI, HExo1

Gene ID: 9156

NCBI Accession: [NP_003677](#)

Pathways: [DNA Damage Repair](#), [Production of Molecular Mediator of Immune Response](#)

Application Details

Application Notes: Optimal working dilution should be determined by the investigator.

Comment: Target Species of Antibody: Human

Restrictions: For Research Use only

Handling

Format: Lyophilized

Reconstitution: Distilled water

Concentration: Lot specific

Buffer: Lyophilized from PBS with 2 % sucrose

Handling Advice: Avoid repeat freeze-thaw cycles.

Storage: 4 °C, -20 °C

Storage Comment: Long term: -20°C, the use of 50% glycerol is recommended if storing aliquots in -20°C for long term use (up to 1 year)

Short term (less than 1 week): 4°C. Avoid freeze-thaw cycles.

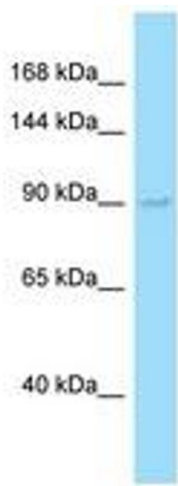


Image 1.