

Datasheet for ABIN6748122
anti-FCGR2B antibody (C-Term)



[Go to Product page](#)

1 Image

Overview

Quantity:	100 µL
Target:	FCGR2B
Binding Specificity:	C-Term
Reactivity:	Human, Monkey
Host:	Rabbit
Clonality:	Polyclonal
Conjugate:	This FCGR2B antibody is un-conjugated
Application:	Western Blotting (WB)

Product Details

Immunogen:	Synthetic peptide from C-Terminus of human FCGR2B (P31994, NP_001002273). Percent identity by BLAST analysis: Human, Chimpanzee, Gorilla, Gibbon, Monkey (100%). Type of Immunogen: Synthetic peptide
Specificity:	Human FCGR2B / CD32B
Predicted Reactivity:	Percent identity by BLAST analysis:
Purification:	Immunoaffinity purified

Target Details

Target:	FCGR2B
Alternative Name:	FCGR2B / CD32B (FCGR2B Products)

Target Details

Background:	Name/Gene ID: FCGR2B Family: Immunoglobulin Synonyms: FCGR2B, CD32, CD32 antigen, CD32B, CDw32, FCG2, FcRII-b, IgG Fc receptor II-b, Fc gamma RIIb, Fc-gamma RII-b, FCGR2, Fc-gamma-RIIb, IGFR2
Gene ID:	2213
NCBI Accession:	NP_001002273
UniProt:	P31994
Pathways:	Cellular Response to Molecule of Bacterial Origin , Regulation of Leukocyte Mediated Immunity , Production of Molecular Mediator of Immune Response , BCR Signaling

Application Details

Application Notes:	Optimal working dilution should be determined by the investigator.
Comment:	Target Species of Antibody: Human
Restrictions:	For Research Use only

Handling

Format:	Lyophilized
Reconstitution:	Distilled water
Concentration:	Lot specific
Buffer:	Lyophilized from PBS with 2 % sucrose
Handling Advice:	Avoid repeat freeze-thaw cycles.
Storage:	4 °C,-20 °C
Storage Comment:	Long term: -20°C, the use of 50% glycerol is recommended if storing aliquots in -20°C for long term use (up to 1 year) Short term (less than 1 week): 4°C. Avoid freeze-thaw cycles.

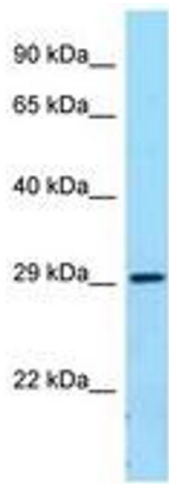


Image 1.