

Datasheet for ABIN6748145  
**anti-OXSR1 antibody (AA 307-356)**



[Go to Product page](#)

1 Image

## Overview

Quantity:	100 µL
Target:	OXSR1
Binding Specificity:	AA 307-356
Reactivity:	Human, Mouse, Rat, Cow, Dog, Guinea Pig, Horse, Monkey, Bat, Pig
Host:	Rabbit
Clonality:	Polyclonal
Conjugate:	This OXSR1 antibody is un-conjugated
Application:	Western Blotting (WB)

## Product Details

Immunogen:	Synthetic peptide located between aa307-356 of mouse Oxsr1 (Q6P9R2, NP_598746). Percent identity by BLAST analysis: Human, Gorilla, Orangutan, Gibbon, Monkey, Galago, Marmoset, Mouse, Rat, Elephant, Dog, Bovine, Bat, Horse, Pig, Opossum, Guinea pig, Platypus (100%), Lizard, Xenopus, Seabass, Stickleback, Zebrafish (92%), Rabbit, Turkey, Zebra finch, Chicken (85%).  Type of Immunogen: Synthetic peptide
Specificity:	Mouse OXSR1
Predicted Reactivity:	Percent identity by BLAST analysis: Human, Rat, Dog, Bovine, Horse, Pig (100%) Mouse, Xenopus, Zebrafish (92%) Chicken (85%).
Purification:	Immunoaffinity purified

## Target Details

Target:	OXR1
Alternative Name:	OXR1 ( <a href="#">OXR1 Products</a> )
Background:	Name/Gene ID: OXR1 Subfamily: FRAY Family: Protein Kinase  Synonyms: OXR1, Oxidative-stress responsive 1, KIAA1101
Gene ID:	9943
NCBI Accession:	<a href="#">NP_598746</a>
UniProt:	<a href="#">O95747</a>
Pathways:	<a href="#">Tube Formation</a>

## Application Details

Application Notes:	Optimal working dilution should be determined by the investigator.
Comment:	Target Species of Antibody: Mouse
Restrictions:	For Research Use only

## Handling

Format:	Lyophilized
Reconstitution:	Distilled water
Concentration:	Lot specific
Buffer:	Lyophilized from PBS with 2 % sucrose
Handling Advice:	Avoid repeat freeze-thaw cycles.
Storage:	4 °C, -20 °C
Storage Comment:	Long term: -20°C, the use of 50% glycerol is recommended if storing aliquots in -20°C for long term use (up to 1 year) Short term (less than 1 week): 4°C. Avoid freeze-thaw cycles.

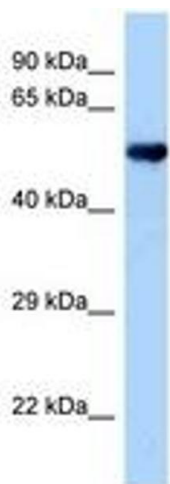


Image 1.