

Datasheet for ABIN6748146  
**anti-PHF23 antibody (AA 191-240)**[Go to Product page](#)

## 1 Image

## Overview

Quantity:	100 µL
Target:	PHF23
Binding Specificity:	AA 191-240
Reactivity:	Human, Cow, Mouse, Rat, Dog, Pig, Rabbit, Guinea Pig, Monkey
Host:	Rabbit
Clonality:	Polyclonal
Conjugate:	This PHF23 antibody is un-conjugated
Application:	Western Blotting (WB)

## Product Details

Immunogen:	Synthetic peptide located between aa191-240 of mouse Phf23 (Q8BSN5). Percent identity by BLAST analysis: Human, Gorilla, Monkey, Galago, Marmoset, Mouse, Rat, Elephant, Panda, Dog, Bovine, Rabbit, Pig, Opossum, Guinea pig (100%).  Type of Immunogen: Synthetic peptide
Specificity:	Mouse PHF23
Predicted Reactivity:	Percent identity by BLAST analysis: Human, Mouse, Rat, Dog, Bovine, Rabbit, Pig, Guinea pig (100%).
Purification:	Immunoaffinity purified

## Target Details

Target:	PHF23
Alternative Name:	PHF23 ( <a href="#">PHF23 Products</a> )
Background:	Name/Gene ID: PHF23  Synonyms: PHF23, PDH-containing protein JUNE-1, PHD finger protein 23, PHD finger protein 23a, HJUNE-1b
Gene ID:	79142
UniProt:	<a href="#">Q9BUL5</a>

## Application Details

Application Notes:	Optimal working dilution should be determined by the investigator.
Comment:	Target Species of Antibody: Mouse
Restrictions:	For Research Use only

## Handling

Format:	Lyophilized
Reconstitution:	Distilled water
Concentration:	Lot specific
Buffer:	Lyophilized from PBS with 2 % sucrose
Handling Advice:	Avoid repeat freeze-thaw cycles.
Storage:	4 °C, -20 °C
Storage Comment:	Long term: -20°C, the use of 50% glycerol is recommended if storing aliquots in -20°C for long term use (up to 1 year) Short term (less than 1 week): 4°C. Avoid freeze-thaw cycles.

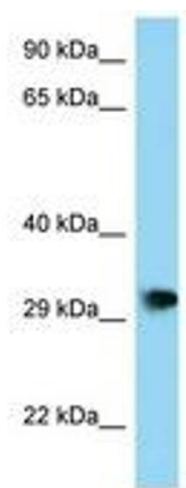


Image 1.