



[Go to Product page](#)

Datasheet for ABIN6748147

## anti-Chitinase antibody (AA 301-350)

### 1 Image

#### Overview

Quantity:	100 µL
Target:	Chitinase (ZFP874B)
Binding Specificity:	AA 301-350
Reactivity:	Mouse
Host:	Rabbit
Clonality:	Polyclonal
Conjugate:	This Chitinase antibody is un-conjugated
Application:	Western Blotting (WB)

#### Product Details

Immunogen:	Synthetic peptide located between aa301-350 of mouse Zfp874b (D3Z0W3, NP_001070259). Percent identity by BLAST analysis: Mouse (100%), Rat (83%), Human (78%).  Type of Immunogen: Synthetic peptide
Specificity:	Mouse Zfp874b
Predicted Reactivity:	Percent identity by BLAST analysis: Mouse (100%).
Purification:	Immunoaffinity purified

#### Target Details

Target:	Chitinase (ZFP874B)
Alternative Name:	Zfp874b ( <a href="#">ZFP874B Products</a> )

## Target Details

---

Background:	Name/Gene ID: Zfp874b  Synonyms: Zfp874b, Rslcan16, Zinc finger protein 874b
Gene ID:	408067
NCBI Accession:	<a href="#">NP_001070259</a>

## Application Details

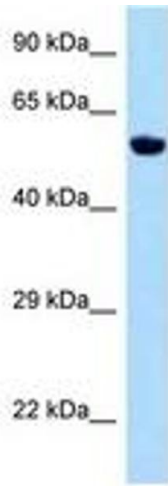
---

Application Notes:	Optimal working dilution should be determined by the investigator.
Comment:	Target Species of Antibody: Mouse
Restrictions:	For Research Use only

## Handling

---

Format:	Lyophilized
Reconstitution:	Distilled water
Concentration:	Lot specific
Buffer:	Lyophilized from PBS with 2 % sucrose
Handling Advice:	Avoid repeat freeze-thaw cycles.
Storage:	4 °C,-20 °C
Storage Comment:	Long term: -20°C, the use of 50% glycerol is recommended if storing aliquots in -20°C for long term use (up to 1 year)  Short term (less than 1 week): 4°C. Avoid freeze-thaw cycles.



**Image 1.**