



[Go to Product page](#)

Datasheet for ABIN6748163
anti-PROSC antibody (C-Term)

1 Image

Overview

Quantity:	100 µL
Target:	PROSC
Binding Specificity:	C-Term
Reactivity:	Human, Dog, Mouse, Monkey
Host:	Rabbit
Clonality:	Polyclonal
Conjugate:	This PROSC antibody is un-conjugated
Application:	Western Blotting (WB)

Product Details

Immunogen:	Synthetic peptide from C-Terminus of human PROSC (O94903, NP_009129). Percent identity by BLAST analysis: Human, Chimpanzee, Gibbon, Monkey (100%), Orangutan, Rat (92%), Galago (91%), Gorilla (85%), Mouse, Dog, Bat, Opossum (84%). Type of Immunogen: Synthetic peptide
Specificity:	Human PROSC
Predicted Reactivity:	Percent identity by BLAST analysis: Human (100%) Rat (92%) Mouse, Dog (84%).
Purification:	Immunoaffinity purified

Target Details

Target:	PROSC
---------	-------

Target Details

Alternative Name: PROSC ([PROSC Products](#))

Background: Name/Gene ID: PROSC

Synonyms: PROSC

Gene ID: 11212

NCBI Accession: [NP_009129](#)

UniProt: [O94903](#)

Application Details

Application Notes: Optimal working dilution should be determined by the investigator.

Comment: Target Species of Antibody: Human

Restrictions: For Research Use only

Handling

Format: Lyophilized

Reconstitution: Distilled water

Concentration: Lot specific

Buffer: Lyophilized from PBS with 2 % sucrose

Handling Advice: Avoid repeat freeze-thaw cycles.

Storage: 4 °C, -20 °C

Storage Comment: Long term: -20°C, the use of 50% glycerol is recommended if storing aliquots in -20°C for long term use (up to 1 year)
Short term (less than 1 week): 4°C. Avoid freeze-thaw cycles.

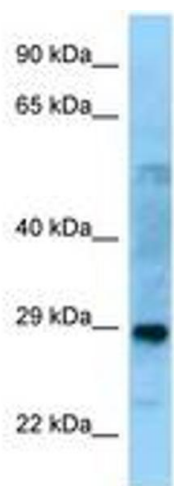


Image 1.